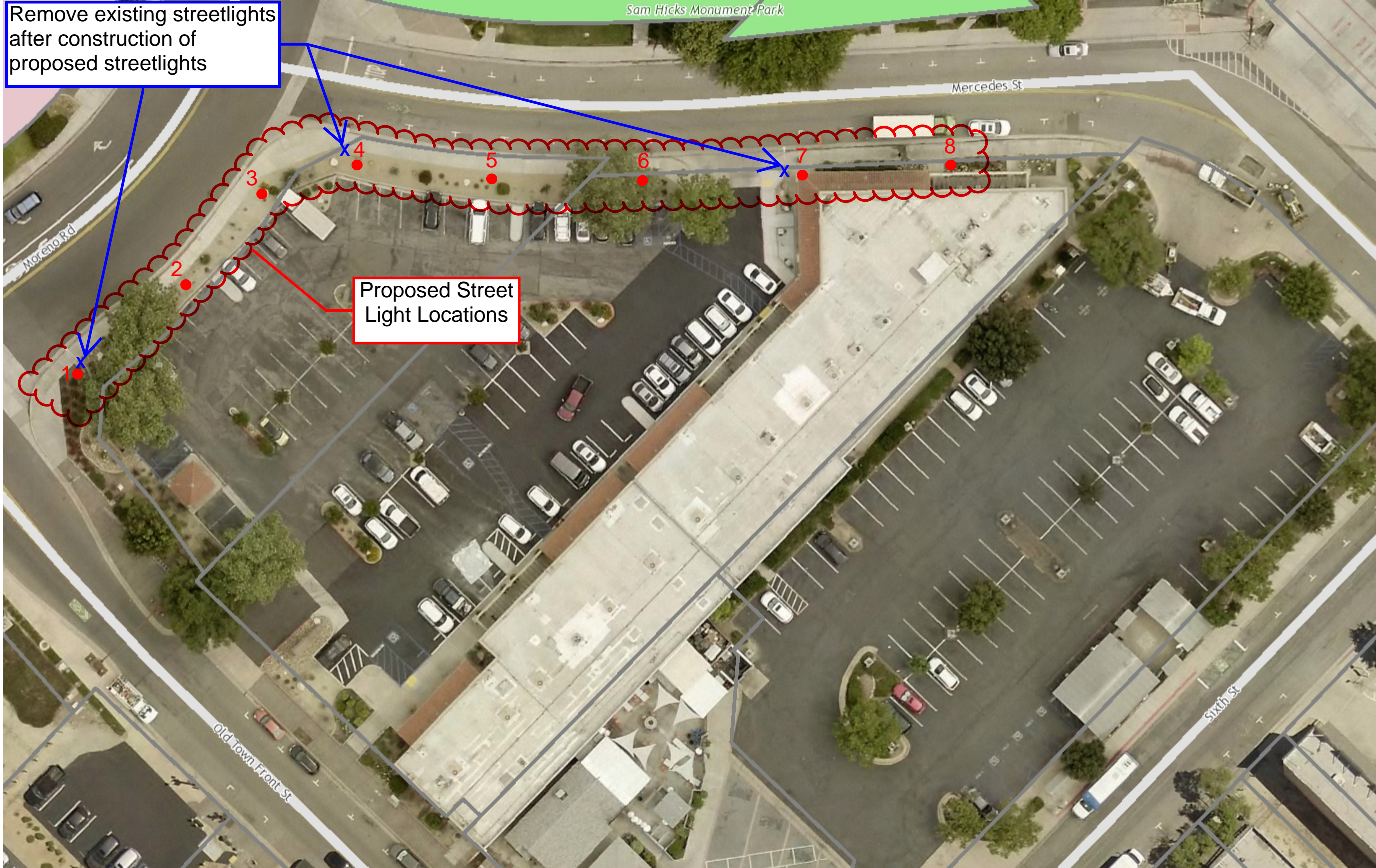


Sidewalks - Old Town Improvements - Additional Streetlights on Moreno Road and Mercedes Street (East of Old Town Front Street), PW22-17

Remove existing streetlights after construction of proposed streetlights



Proposed Street Light Locations

- Legend**
- City of Temecula Boundary
 - Parcels
 - Street Names**
 - Highways**
 - HWY
 - INTERCHANGE
 - INTERSTATE
 - OFFRAMP
 - ONRAMP
 - USHWY
 - Hospitals
 - Creeks
 - Cities
 - Streets**
 - <Null>
 - PAVED
 - PROPOSED
 - UNPAVED
 - Public Facilities
 - Parks
 - Schools

94.0 0 47.02 94.0 Feet

This map is a user generated static output from an Internet mapping site and is for reference only. Data layers that appear on this map may or may not be accurate, current, or otherwise reliable.
THIS MAP IS NOT TO BE USED FOR NAVIGATION

