

VICINITY MAP
NOT TO SCALE

PROPOSED BOUNDARY MAP
TEMECULA PUBLIC FINANCING AUTHORITY
COMMUNITY FACILITIES DISTRICT NO. 23-01 (ALTAIR) AND
IMPROVEMENT AREA NO. 1 OF THE TEMECULA PUBLIC FINANCING AUTHORITY
COMMUNITY FACILITIES DISTRICT NO. 23-01 (ALTAIR)
COUNTY OF RIVERSIDE, STATE OF CALIFORNIA
 SECTION 11, TOWNSHIP 8 SOUTH, RANGE 3 WEST, SAN BERNARDINO BASE AND MERIDIAN

I HEREBY CERTIFY THAT THE WITHIN MAP SHOWING PROPOSED BOUNDARIES OF THE TEMECULA PUBLIC FINANCING AUTHORITY COMMUNITY FACILITIES DISTRICT NO. 23-01 (ALTAIR) AND IMPROVEMENT AREA No. 1 THEREOF, COUNTY OF RIVERSIDE, STATE OF CALIFORNIA, WAS APPROVED BY THE BOARD OF DIRECTORS AT A REGULAR MEETING THEREOF, HELD ON THE ____ DAY OF _____, 20____, BY ITS RESOLUTION NO. _____.

 SECRETARY OF THE BOARD OF DIRECTORS,
 TEMECULA PUBLIC FINANCING AUTHORITY

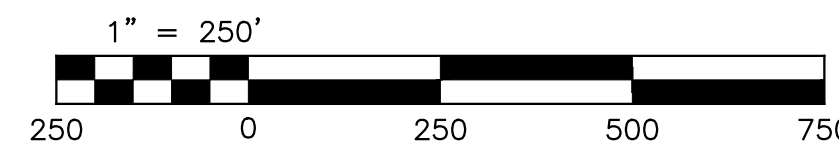
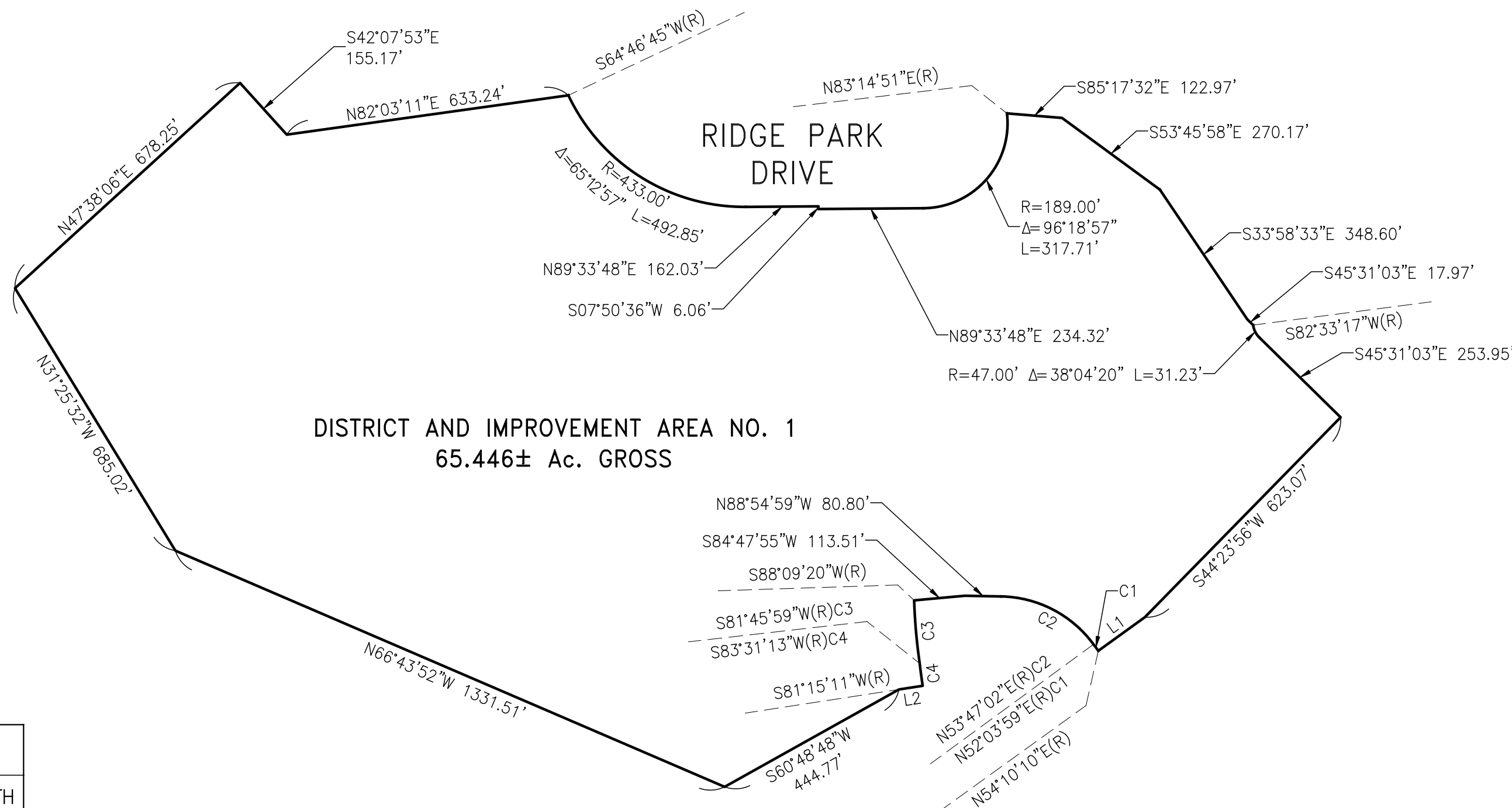
FILED IN THE OFFICE OF THE SECRETARY OF THE BOARD OF DIRECTORS OF TEMECULA PUBLIC FINANCING AUTHORITY, CITY OF TEMECULA, COUNTY OF RIVERSIDE, STATE OF CALIFORNIA THIS ____ DAY OF _____, 20____,

 SECRETARY OF THE BOARD OF DIRECTORS,
 TEMECULA PUBLIC FINANCING AUTHORITY

RECORDED THIS ____ DAY OF _____, 20____, AT THE HOUR OF ____ O'CLOCK __.M., IN BOOK ____ PAGE ____ OF MAPS OF ASSESSMENT AND COMMUNITY FACILITIES DISTRICTS IN THE OFFICE OF THE COUNTY RECORDER IN THE COUNTY OF RIVERSIDE, STATE OF CALIFORNIA. FEE: _____ DOCUMENT NO. _____

PETER ALDANA, ASSESSOR, COUNTY CLERK, RECORDER

BY: _____
 DEPUTY



LINE TABLE		
LINE #	LENGTH	DIRECTION
L1	127.79'	S54°10'10"W
L2	53.39'	S81°15'11"W

CURVE TABLE			
CURVE #	RADIUS	DELTA	LENGTH
C1	488.00'	2°06'11"	17.91'
C2	261.00'	52°42'02"	240.07'
C3	1266.00'	6°23'21"	141.17'
C4	1268.00'	2°16'02"	50.18'

THIS BOUNDARY MAP CORRECTLY SHOWS THE BOUNDARIES OF THE COMMUNITY FACILITIES DISTRICT. PARCEL NUMBERS ARE RIVERSIDE COUNTY ASSESSOR'S PARCEL NUMBERS. FOR DETAIL CONCERNING THE LINES AND DIMENSIONS OF LOTS OR PARCELS REFER TO THE COUNTY ASSESSOR'S MAPS FOR FISCAL YEAR 2023-2024.

DISTRICT AND IMPROVEMENT AREA No. 1

- 940-310-013(PORZION)
- 940-310-015
- 940-310-016
- 940-310-044
- 940-310-045
- 940-310-046
- 940-310-047
- 940-310-048

LEGEND:

- PROPOSED DISTRICT AND IMPROVEMENT NO.1 BOUNDARY
- XXX-XXX-XXX ASSESSOR'S PARCEL NUMBER

