

# TRACT MAP NO. 37341

### NOTES

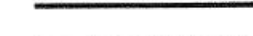



1. SEE SHEET NO. 2 FOR BOUNDARY CONTROL SHEET, SURVEYOR'S NOTES AND MONUMENT NOTES.
2. SEE SHEET NO. 3 FOR BOUNDARY MAP, BASIS OF BEARINGS AND VICINITY MAP.

BEING A SUBDIVISION OF A PORTION OF LOTS 24 AND 25 OF TRACT MAP NO. 37368, AS FILED IN BOOK 468, PAGES 89 THROUGH 98, INCLUSIVE, OF MAPS, SHOWN AS PARCEL A PER LOT LINE ADJUSTMENT NO. LD19-1393 RECORDED FEBRUARY 20, 2020 AS INSTRUMENT NO. 2020-0076510, ALL IN THE CITY OF TEMECULA, COUNTY OF RIVERSIDE, STATE OF CALIFORNIA, LYING WITHIN SECTION 21, TOWNSHIP 7 SOUTH, RANGE 2 WEST, SAN BERNARDINO MERIDIAN.

RICK ENGINEERING COMPANY

MARCH 2019

### LEGEND

-  INDICATES BOUNDARY.
-  INDICATES CENTER LINE.
-  INDICATES LOT LINE.
-  INDICATES SHEET NO.

### EASEMENT NOTES

1. AN EASEMENT FOR PUBLIC UTILITIES AND INCIDENTAL PURPOSES IN FAVOR OF GENERAL TELEPHONE COMPANY OF CALIFORNIA RECORDED DECEMBER 5, 1988 AS INSTRUMENT NO. 88-354239, O.R. CANNOT BE PLOTTED FROM RECORD..
2. A 3' PUBLIC UTILITY EASEMENT DEDICATED HEREON.
3. A PRIVATE DRAINAGE EASEMENT WITHIN LOT 53 AND LOT 54.
4. AN EASEMENT FOR PUBLIC UTILITY PURPOSES IN FAVOR OF EASTERN MUNICIPAL WATER DISTRICT RECORDED NOVEMBER 14, 2013 AS DOCUMENT NO. 2013-0539683, O.R.
5. AN EASEMENT FOR UNDERGROUND ELECTRICAL SUPPLY SYSTEMS AND COMMUNICATION SYSTEMS AND INCIDENTAL PURPOSES IN FAVOR OF SOUTHERN CALIFORNIA EDISON COMPANY, A CORPORATION RECORDED DECEMBER 4, 2019 AS INSTRUMENT NO. 2019-0499070, O.R.

### SHEET INDEX MAP

TRACT NO.  
37368  
MB 468/89-98  
6

TRACT NO.  
37368  
MB 468/89-98  
23

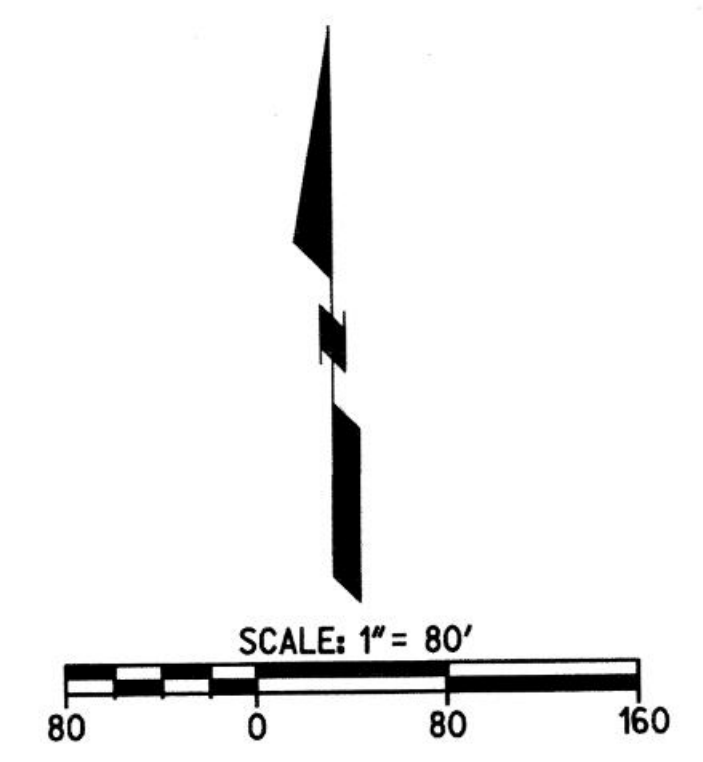
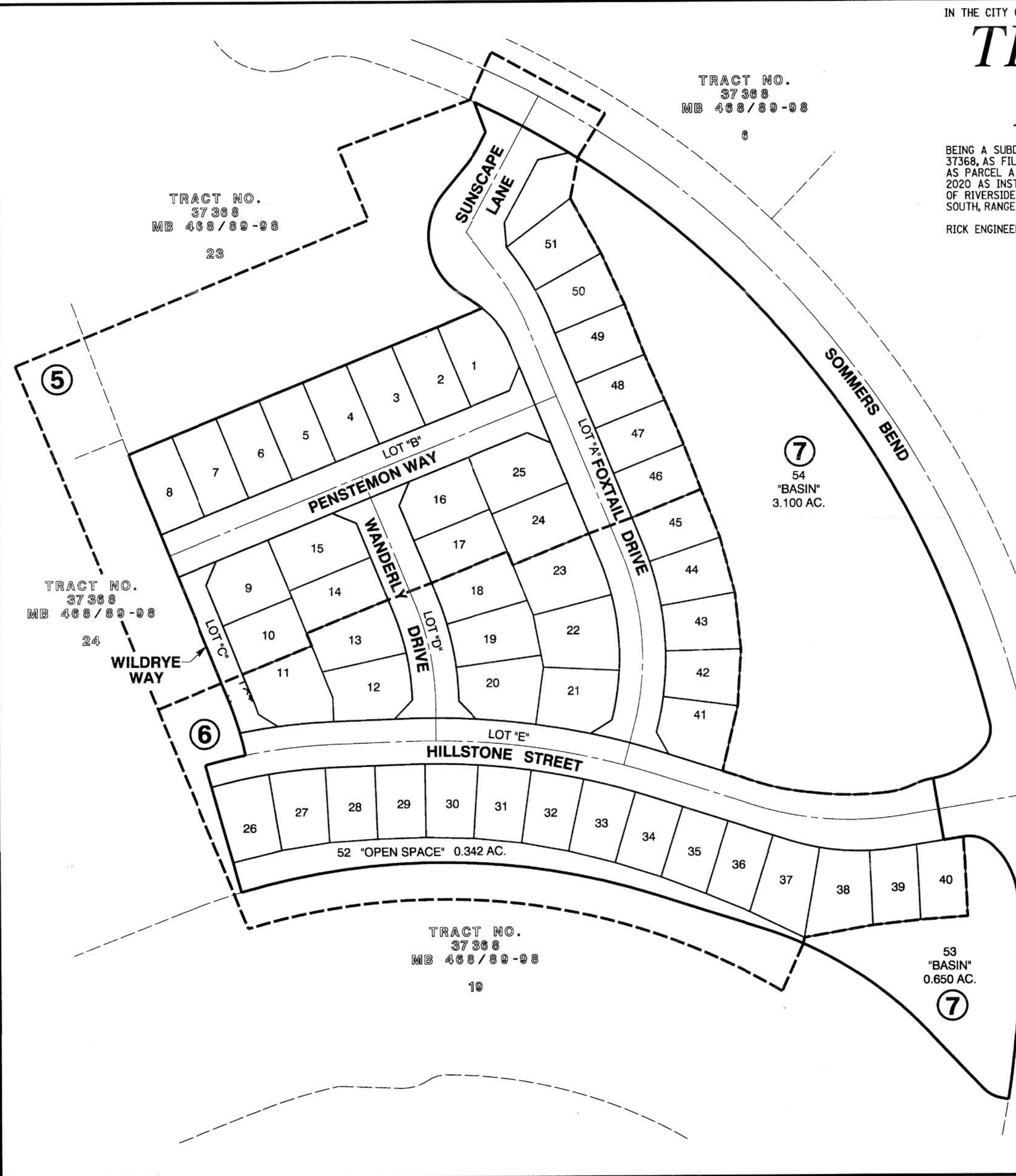
7  
54  
"BASIN"  
3.100 AC.

TRACT NO.  
37368  
MB 468/89-98  
24

TRACT NO.  
37368  
MB 468/89-98  
9

TRACT NO.  
37368  
MB 468/89-98  
19

53  
"BASIN"  
0.650 AC.  
7



COPY 483/35

IN THE CITY OF TEMECULA, COUNTY OF RIVERSIDE, STATE OF CALIFORNIA

# TRACT MAP NO. 37341-17

SHEET 4 OF 7 SHEETS

- LEGEND**
- INDICATES BOUNDARY.
  - - - - INDICATES CENTER LINE.
  - INDICATES LOT LINE.
  - ⑤ INDICATES SHEET NO.

BEING A PORTION OF PARCEL B OF NOTICE OF LOT LINE ADJUSTMENT NO. LD19-1393 RECORDED FEBRUARY 20, 2020 AS INSTRUMENT NO. 2020-0076510 OF OFFICIAL RECORDS, A PORTION OF LOTS 24 AND 25 OF TRACT MAP NO. 37368, AS FILED IN BOOK 468, PAGES 89 THROUGH 98, INCLUSIVE, OF MAPS, SHOWN AS PARCEL B OF NOTICE OF LOT LINE ADJUSTMENT NO. LD21-1111 RECORDED JANUARY 6, 2022 AS INSTRUMENT NO. 2022-0008833 OF OFFICIAL RECORDS, ALL IN THE CITY OF TEMECULA, COUNTY OF RIVERSIDE, STATE OF CALIFORNIA, LYING WITHIN SECTION 21, TOWNSHIP 7 SOUTH, RANGE 2 WEST, SAN BERNARDINO MERIDIAN.

- NOTES**
1. SEE SHEET NO. 2 FOR BOUNDARY CONTROL SHEET, SURVEYOR'S NOTES, MONUMENT NOTES AND RECORD DATA FOR BOUNDARY.
  2. SEE SHEET NO. 3 FOR BOUNDARY MAP, BASIS OF BEARINGS AND VICINITY MAP.

**EASEMENT NOTES**

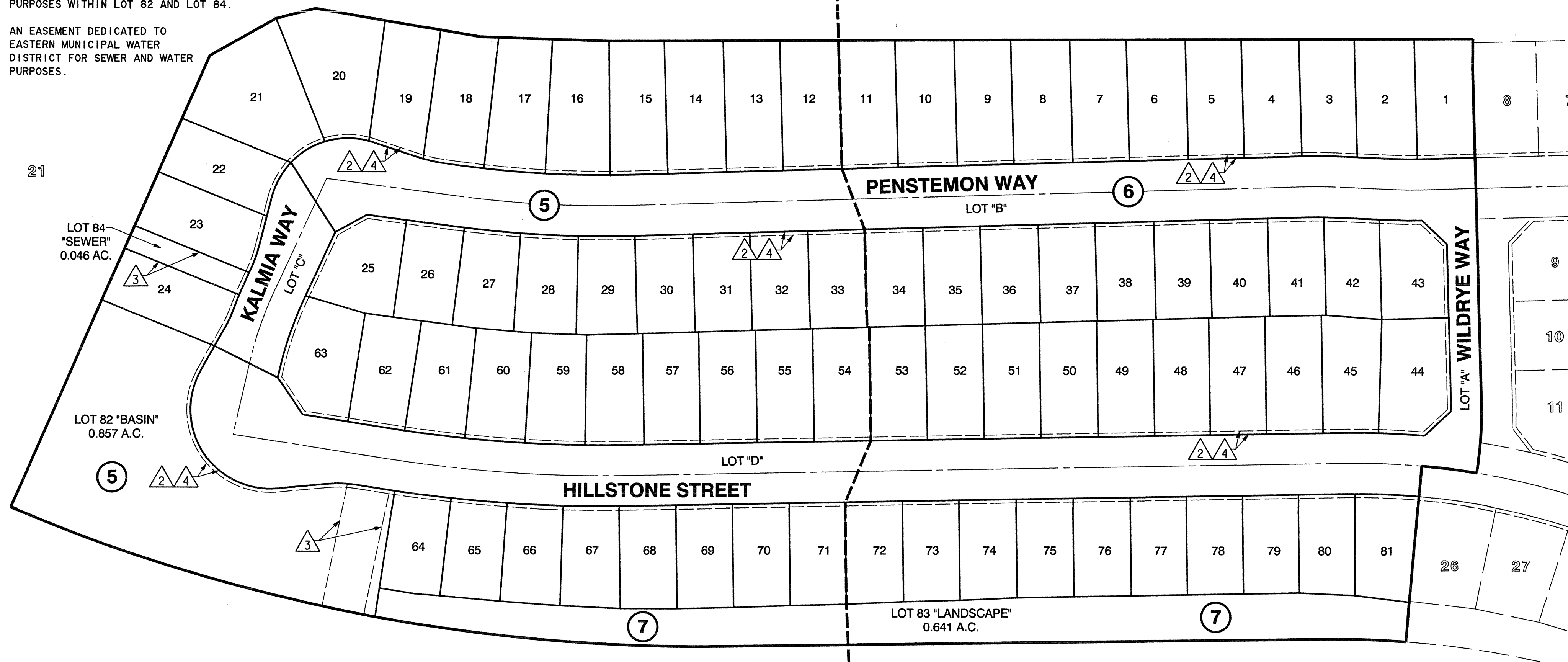
1. AN EASEMENT FOR PUBLIC UTILITIES AND INCIDENTAL PURPOSES IN FAVOR OF GENERAL TELEPHONE COMPANY OF CALIFORNIA RECORDED DECEMBER 5, 1988 AS INSTRUMENT NO. 88-354239, O.R. CANNOT BE PLOTTED FROM RECORD..
2. A 3' PUBLIC UTILITY EASEMENT DEDICATED HEREON.
3. A SEWER EASEMENT DEDICATED TO EASTERN MUNICIPAL WATER DISTRICT FOR SEWER PURPOSES WITHIN LOT 82 AND LOT 84.
4. AN EASEMENT DEDICATED TO EASTERN MUNICIPAL WATER DISTRICT FOR SEWER AND WATER PURPOSES.

RICK ENGINEERING COMPANY

## SHEET INDEX MAP

JUNE 2021

PARCEL A  
 LOT LINE ADJ.  
 NO. LD21-1111  
 INST. NO. 2022-0008833  
 REC. 1-6-2022



TRACT NO.  
 37341  
 MB 473/8-14

TRACT NO.  
 37368  
 MB 468/89-98

19

