





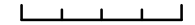
# PW 21-10 Pavement Rehabilitation Program - Ynez Road



## Legend

-  Ynez Road
-  City Boundary

0 250 500 Feet



Updated 11/15/2021

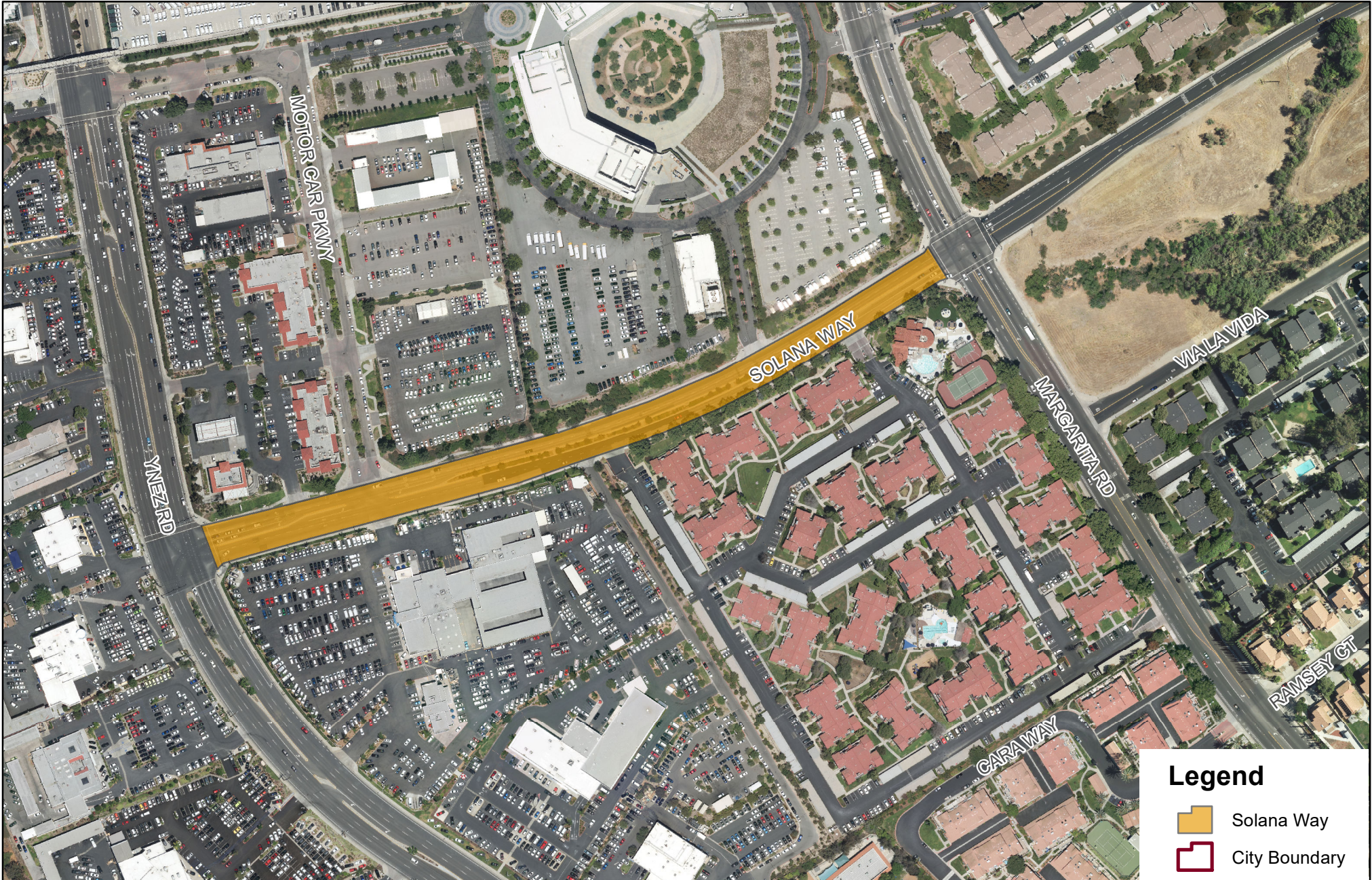
The map GrindProjects.mxd is maintained by City of Temecula GIS. Data and information represented on this map are subject to update and modification. The City of Temecula assumes no warranty or legal responsibility for the information contained on this map. This map is not for reprint or resale. Visit the City of Temecula GIS online at <https://temeculaca.gov/gis>







# PW 21-10 Pavement Rehabilitation Program - Solana Way



The map GrindProjects.mxd is maintained by City of Temecula GIS. Data and information represented on this map are subject to update and modification. The City of Temecula assumes no warranty or legal responsibility for the information contained on this map. This map is not for reprint or resale. Visit the City of Temecula GIS online at <https://temecula.gov/gis>

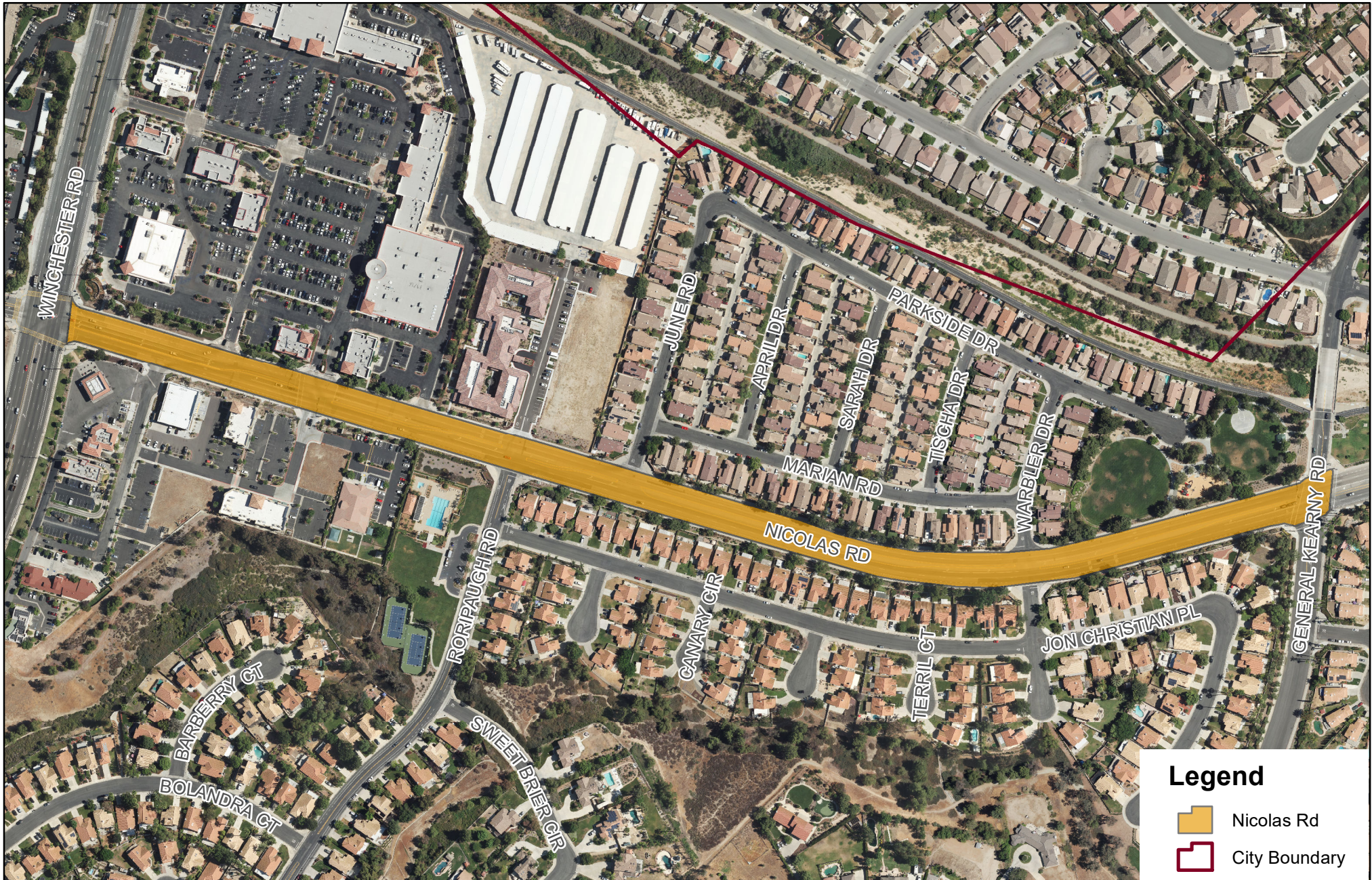
0 125 250 Feet

Updated 11/15/2021





# PW 21-10 Pavement Rehabilitation Program - Nicolas Road



The map GrindProjects.mxd is maintained by City of Temecula GIS. Data and information represented on this map are subject to update and modification. The City of Temecula assumes no warranty or legal responsibility for the information contained on this map. This map is not for reprint or resale. Visit the City of Temecula GIS online at <https://temecula.gov/gis>

0 125 250 Feet



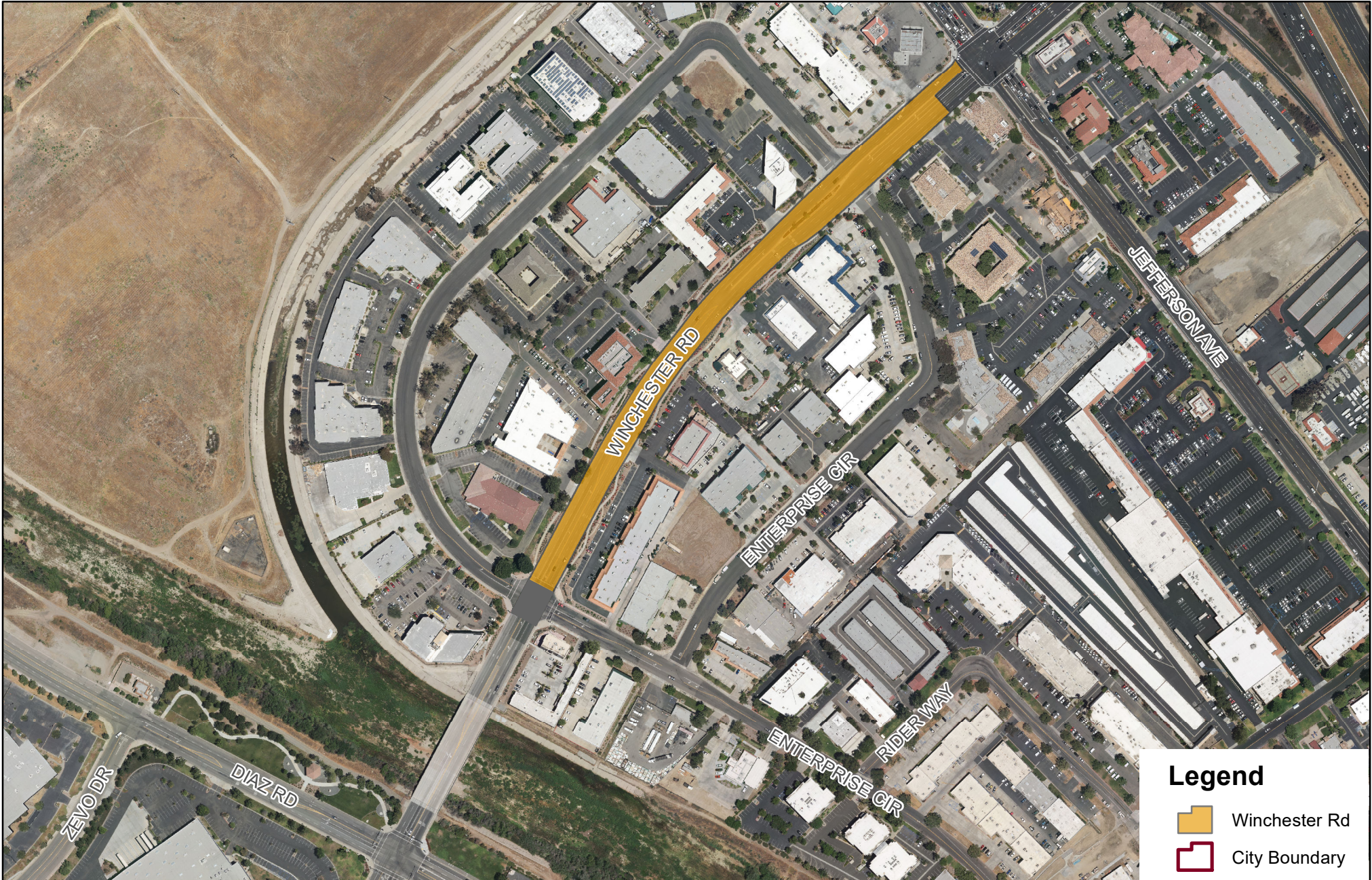
Updated 11/15/2021







# PW 21-10 Pavement Rehabilitation Program - Winchester Road



The map GrindProjects.mxd is maintained by City of Temecula GIS. Data and information represented on this map are subject to update and modification. The City of Temecula assumes no warranty or legal responsibility for the information contained on this map. This map is not for reprint or resale. Visit the City of Temecula GIS online at <https://temeculaca.gov/gis>

0 125 250 Feet  
Updated 11/15/2021