

RESOLUTION NO. 2025-

**A RESOLUTION OF THE CITY COUNCIL OF THE CITY
OF TEMECULA ACCEPTING TEMECULA CENTER
DRIVE INTO THE CITY-MAINTAINED SYSTEM (WITHIN
TRACT MAP 37509 AND 36336)**

THE CITY COUNCIL OF THE CITY OF TEMECULA DOES HEREBY RESOLVE AS
FOLLOWS:

Section 1. The Tract Maps were recorded by the County Recorder as follows:

Tract Map 37509 on October 28th, 2021

Tract Map 36336 on August 20th, 2015

in which offers of dedication for street and public utility purposes were accepted by the City of Temecula from Solana Winchester LLC and Meritage Homes of California, Inc.

Section 2. City Public Works staff reviewed and inspected the public improvements per the approved plans and all repairs and replacements were satisfactorily completed.

Section 3. The bonds will be reduced to 10% and released after a one-year warranty period.

Section 4. The City Council of the City of Temecula hereby accepts into the City-Maintained Street System Temecula Center Drive and associated City drainage improvements offered to and accepted by the City of Temecula described in Exhibits “A” and “B” attached hereto.

PASSED, APPROVED, AND ADOPTED by the City Council of the City of Temecula this 10th day of June, 2025.

Brenden Kalfus, Mayor

ATTEST:

Randi Johl, City Clerk

[SEAL]

STATE OF CALIFORNIA)
COUNTY OF RIVERSIDE) ss
CITY OF TEMECULA)

I, Randi Johl, City Clerk of the City of Temecula, do hereby certify that the foregoing Resolution No. 2025- was duly and regularly adopted by the City Council of the City of Temecula at a meeting thereof held on the 10th day of June, 2025, by the following vote:

AYES: COUNCIL MEMBERS:

NOES: COUNCIL MEMBERS:

ABSTAIN: COUNCIL MEMBERS:

ABSENT: COUNCIL MEMBERS:

Randi Johl, City Clerk

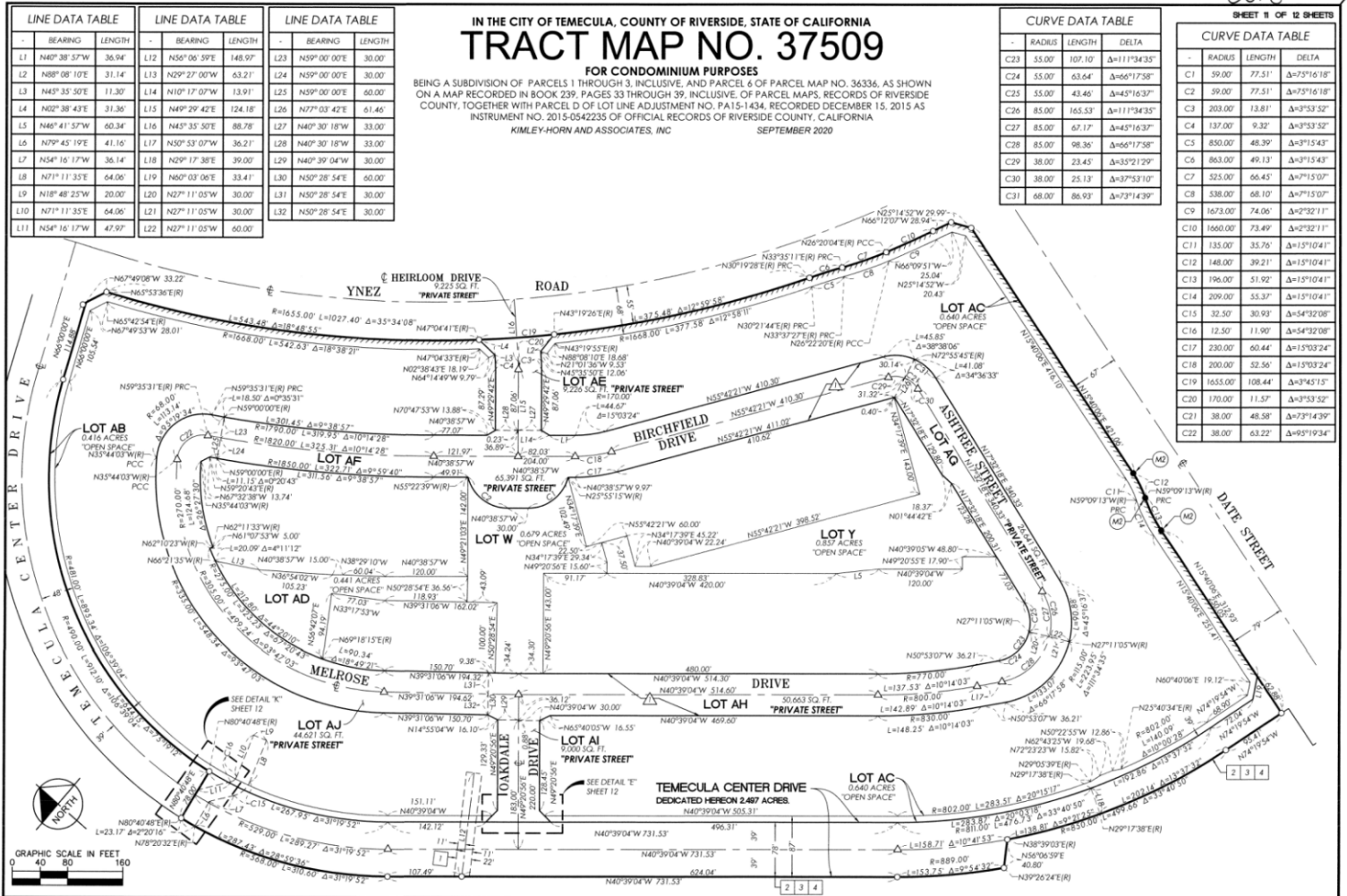
**City of Temecula
Resolution No. 25-
EXHIBIT “A”**

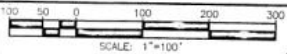
Accepting Temecula Center Drive offered to and accepted by the City of Temecula as indicated on **Tract Map 37509 and 36336** into the City-Maintained Street System as described as follows:

Temecula Center Drive

1. “Temecula Center Drive Dedicated Hereon” of said Tract Map 37509
2. Lot “A” of said Tract Map 36336

City of Temecula
Resolution No. 25-
EXHIBIT "B"





IN THE CITY OF TEMECULA, COUNTY OF RIVERSIDE, STATE OF CALIFORNIA.

SHEET 4 OF 7 SHEETS

PARCEL MAP NO. 36336

BEING A SUBDIVISION OF LOT C AND LOT D OF LOT LINE ADJUSTMENT NO. PA07-0249
RECORDED NOVEMBER 15, 2007 AS INSTRUMENT NO. 2007-0695987 OF OFFICIAL RECORDS
OF RIVERSIDE COUNTY, CALIFORNIA.

Michael Baker
INTERNATIONAL

JUNE 2015

DATA TABLE			
NO.	BEARING/DELTA	RADIUS	LENGTH
1	(N23°59'49"W	---	39.00'
2	(N66°00'11"E	---	12.00'
3	(N23°59'49"W	---	39.00'
4	(N67°49'42"W	---	33.21'
5	03°57'11"	1655.00'	114.18'
6	N80°40'59"E	(R)	78.00'
7	N80°40'59"E	---	39.00'
8	N80°40'59"E	---	39.00'
9	(N23°59'49"W	---	125.67'
10	(N23°59'49"W	---	59.92'
11	(N23°59'49"W	---	65.75'
12	(00°06'19"	1600.00'	2.94'
13	09°19'56"	490.00'	79.81'
14	63°20'00"	31.00'	34.27'
15	50°49'58"	61.00'	54.12'
16	N89°58'36"W	---	67.75'
17	N00°01'24"E	---	76.00'
18	N22°09'17"W	---	86.23'

SEE SHEET 2 FOR SURVEYOR'S NOTES, MONUMENT NOTE,
EASEMENT NOTE, BASIS OF BEARINGS NOTE,
ENVIRONMENTAL CONSTRAINT NOTE AND VICINITY MAP.

