



Safety and Security Plan for City Hall



RIVERSIDE COUNTY SHERIFF'S OFFICE



Background

- At the request of the City Manager's Office, Captain Rigali and Lieutenant Pierson were asked to develop a plan to address safety and security at City Hall.
- This security plan included walk-through inspections, consulting with SWAT Team members, our personal experiences with critical incidents, and a realistic threat assessment of City Hall.
- Cautious versus paranoid mentality.





Safety Considerations

- City Hall is a beautiful building but was not designed entirely from a safety perspective.
- Many features, such as the multiple entry / exit doors, the ability to drive vehicles completely around the facility, and exterior glass walls pose security concerns.
- The very nature of city government and the reality that not all people are happy with decisions made by elected officials or city employees.





Current Safety Protocols

- Video cameras / key card access.
- City Hall has a dedicated deputy sheriff.
- An RSO Special Team (CORE) is stationed on the second floor of City Hall.
- Another RSO Special Team (METRO) is stationed at the Old Town Sheriff's Substation
- Deputies are routinely coming and going from City Hall during their shifts.





Safety Proposal Key Points

- Control the ingress and egress of City Hall.
- Designated public and employee entrances and exits.
- Review of current entrances and exits used by public and employees.





Point of Entry: City Hall

Public Entrance / Exit



RIVERSIDE COUNTY SHERIFF'S OFFICE



Point of Entry: Council Chambers

Proposed Employee Entrance / Exit



RIVERSIDE COUNTY SHERIFF'S OFFICE



Point of Entry: West Wing



- Development Services Entry
- Entrance only used when needed
- Restroom doors or hallway doors are locked. No dual access.
- All entrances / exits are on the west side of City Hall.





Safety Proposal Screening

- Screening process conducted using metal detectors, wands, and x-ray machines.



RIVERSIDE COUNTY SHERIFF'S OFFICE



Safety Proposal Equipment

Metal Detectors

Walk-Through Metal Detector



[More Images](#)

Quickly detects guns, knives and razor blades at schools, concerts, night clubs and government buildings.

- Portable and easy to use. 5-minute setup with no tools required.
- Operates up to 40 hours on rechargeable 12V batteries. No cords needed.
- 3 sensor zones with LED indicators provide head-to-toe detection.
- Carry strap and 2 wheels make transportation quick and easy.
- 100 sensitivity settings. Can be adjusted to pick up items as small as a bobby pin.

✚ **Free Offer**

- Each entrance has a dedicated metal detector.
- Approximate price is **\$5k** per machine.
- Total of **3** needed.





Safety Proposal Equipment

Wands



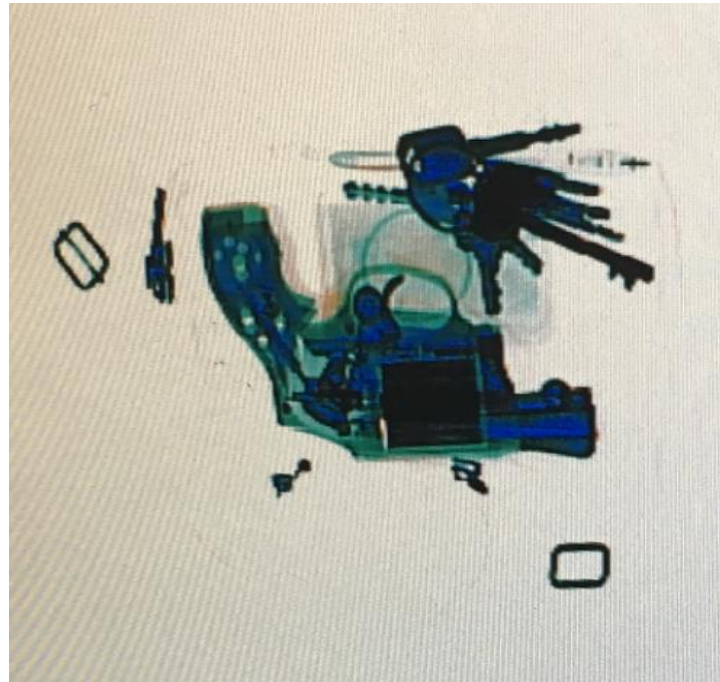
- Cost is **\$250.00** each.
- Each screening station should have two wands (**6 total**).





Safety Proposal Device

X-ray machine



- Price varies depending on make, model, and size.
- Average cost ranges from **\$50k to \$75k.**
- Suggested location is the lobby to Council Chambers.





Safety Proposal

- Contracted private security services will be appointed to operate the proposed entrances into City Hall.
- RSO's Court Services Division has a professional services agreement with Allied Universal. Cost per hour, per security guard, is **\$25.67**
- A minimum of **3** security guards are needed to operate the employee and public entrances.
- Three guards, **40**-hours a week, approximately **\$3,080.40**.
- Additional security will be needed if the conference center is occupied, and for council and commission meetings.





Safety Proposal

Additional Considerations for Security Personnel

- Workstations: Rubber floor mats, chairs, small desk at or near entrances.
- Access to a break room for lunch / breaks.
- Communication will be between security and RSO Personnel.
- Lieutenant Pierson will be responsible for supervising and managing security personnel.





Additional Considerations



- **Prohibited items:** Firearms, knives, scissors, razor blades, chemical agents.
- **Any** item deemed a security concern.
- CCW policy discussion.
- Differentiate between prohibited items with members of the public and city employees in the course of their duties.





Additional Considerations

- Signage to name the proper entrances / exits.
- Signage informing of the screening process that bags, backpacks, briefcases will be searched.
- Stanchions needed to direct and block off areas.
- ✓ Need to limit key card access / Alarming exterior exit doors.
- ✓ Conversations with our City Attorney / Employee Union.
- Cultural changes with the public and employees.





End Goal

- All entrances and exits are on the west side of the building.
- Any item deemed suspicious is x-rayed at the employee entrance.
- Consider the use of a cart from public to employee entrance for heavy or bulky items.
- Every person inside City Hall has been screened for weapons.
- During city council or commission nights, the only point of entry is through Council Chambers where metal detectors and x-ray machine is located.
- During city council or commission nights, the only access to the first floor is council chambers. The front lobby is closed.





Questions?



RIVERSIDE COUNTY SHERIFF'S OFFICE