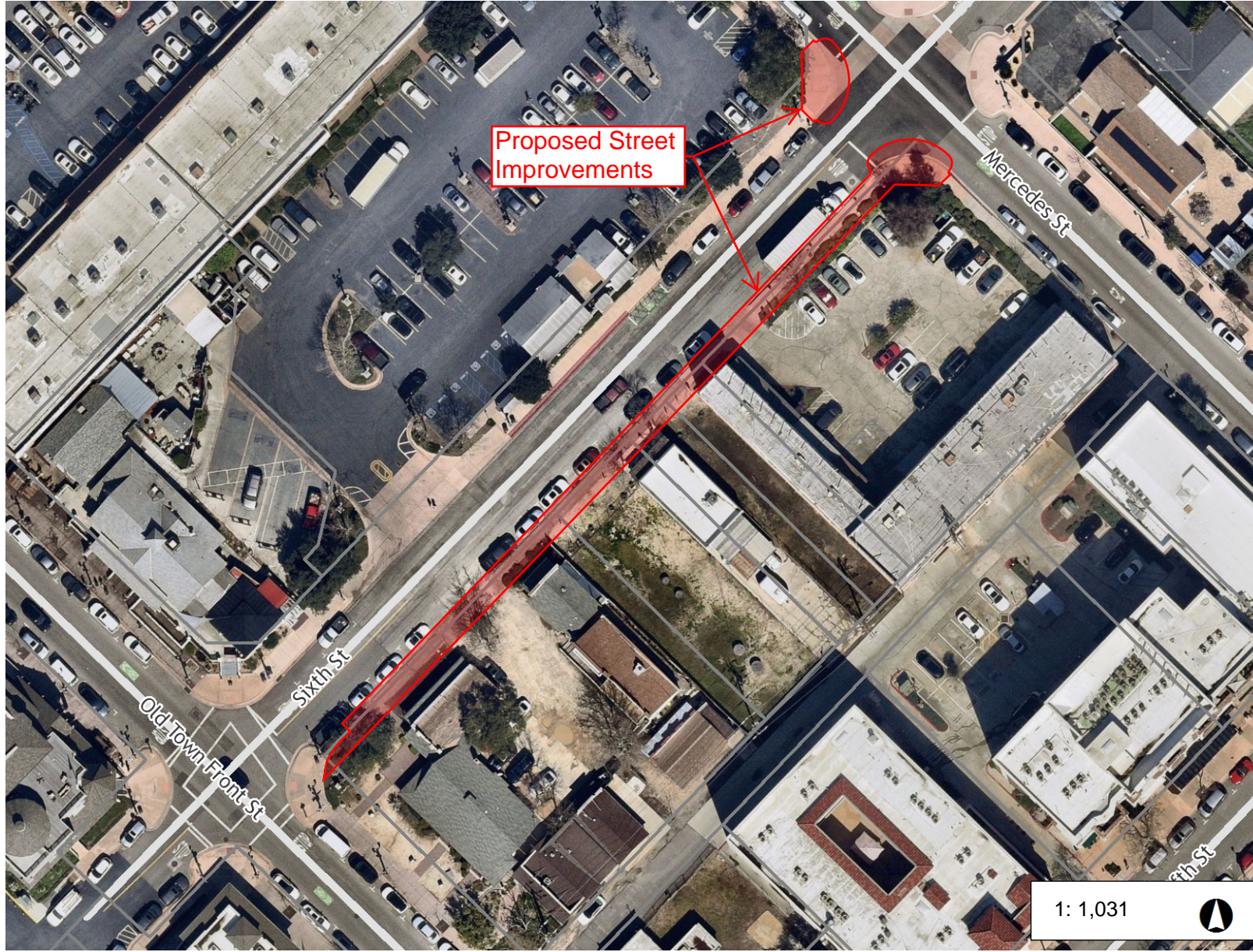
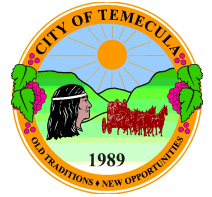


# Project Location Map Sixth Street Improvements

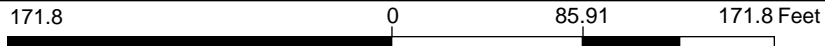
[Formerly, "PW22-16 Sidewalks - Old Town Improvements - South Side of Sixth Street (Old Town Front Street to Mercedes Street)"]



## Legend

- Parcels (February 2024)
- Special Zoning Parcels
- City of Temecula Boundary
- Street Names**
- Highways**
- HWY
- INTERCHANGE
- INTERSTATE
- OFFRAMP
- ONRAMP
- USHWY
- Hospitals
- Creeks
- Cities
- Streets**
- <Null>
- PAVED
- PROPOSED
- UNPAVED
- Public Facilities
- Parks
- Schools

1: 1,031



WGS\_1984\_Web\_Mercator\_Auxiliary\_Sphere  
© Latitude Geographics Group Ltd.

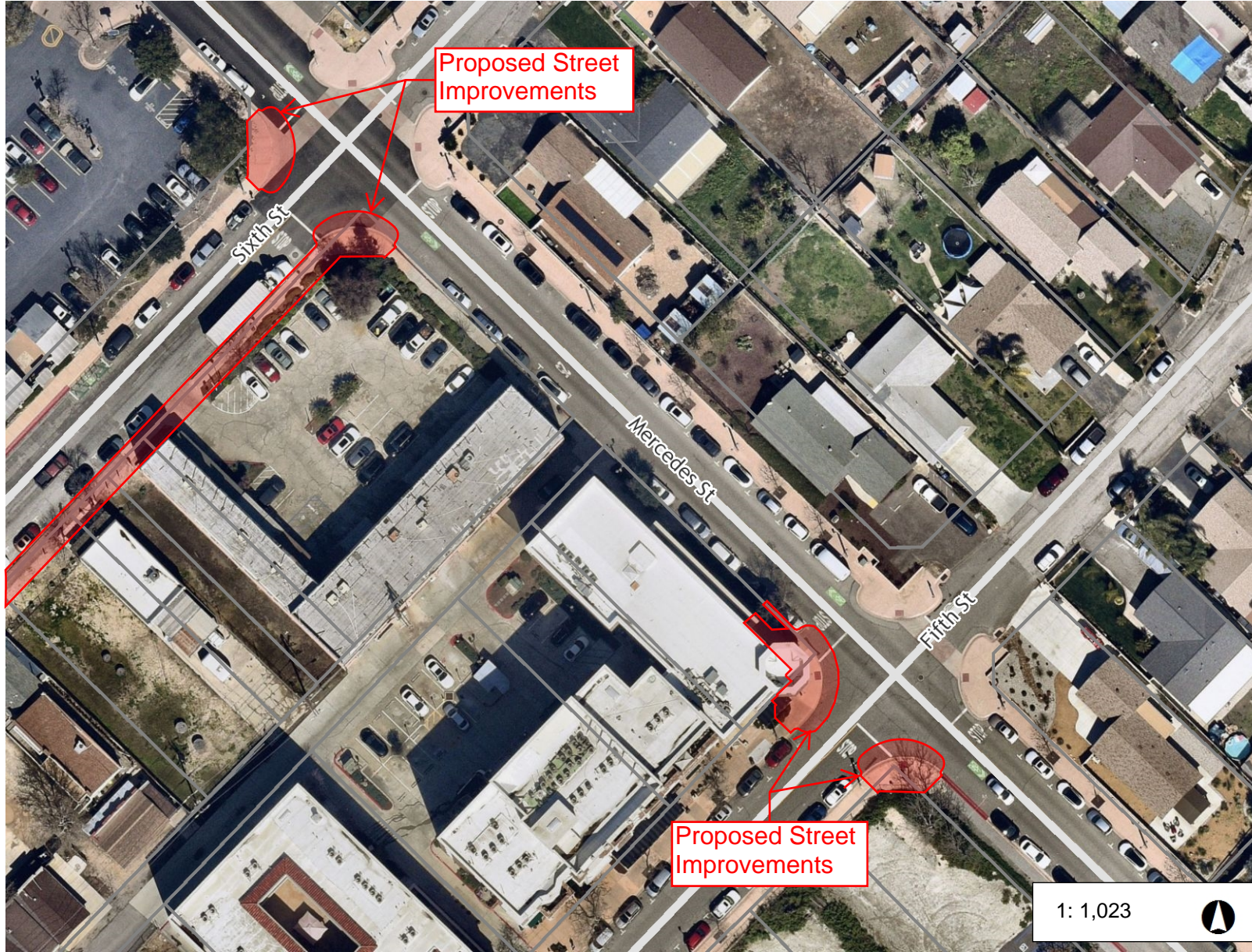
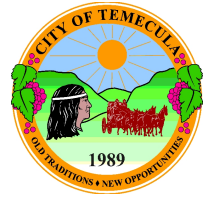
This map is a user generated static output from an Internet mapping site and is for reference only. Data layers that appear on this map may or may not be accurate, current, or otherwise reliable.

THIS MAP IS NOT TO BE USED FOR NAVIGATION

## Notes

# Project Location Map Sixth Street Improvements

[Formerly, "PW22-16 Sidewalks - Old Town Improvements - South Side of Sixth Street (Old Town Front Street to Mercedes Street)"]



## Legend

- Parcels (February 2024)
- Special Zoning Parcels
- City of Temecula Boundary
- Street Names**
- Highways**
- HWY
- INTERCHANGE
- INTERSTATE
- OFFRAMP
- ONRAMP
- USHWY
- Hospitals
- Creeks
- Cities
- Streets**
- <Null>
- PAVED
- PROPOSED
- UNPAVED
- Public Facilities
- Parks
- Schools

1: 1,023



170.4                      0                      85.21                      170.4 Feet

WGS\_1984\_Web\_Mercator\_Auxiliary\_Sphere  
© Latitude Geographics Group Ltd.

This map is a user generated static output from an Internet mapping site and is for reference only. Data layers that appear on this map may or may not be accurate, current, or otherwise reliable.

THIS MAP IS NOT TO BE USED FOR NAVIGATION

## Notes