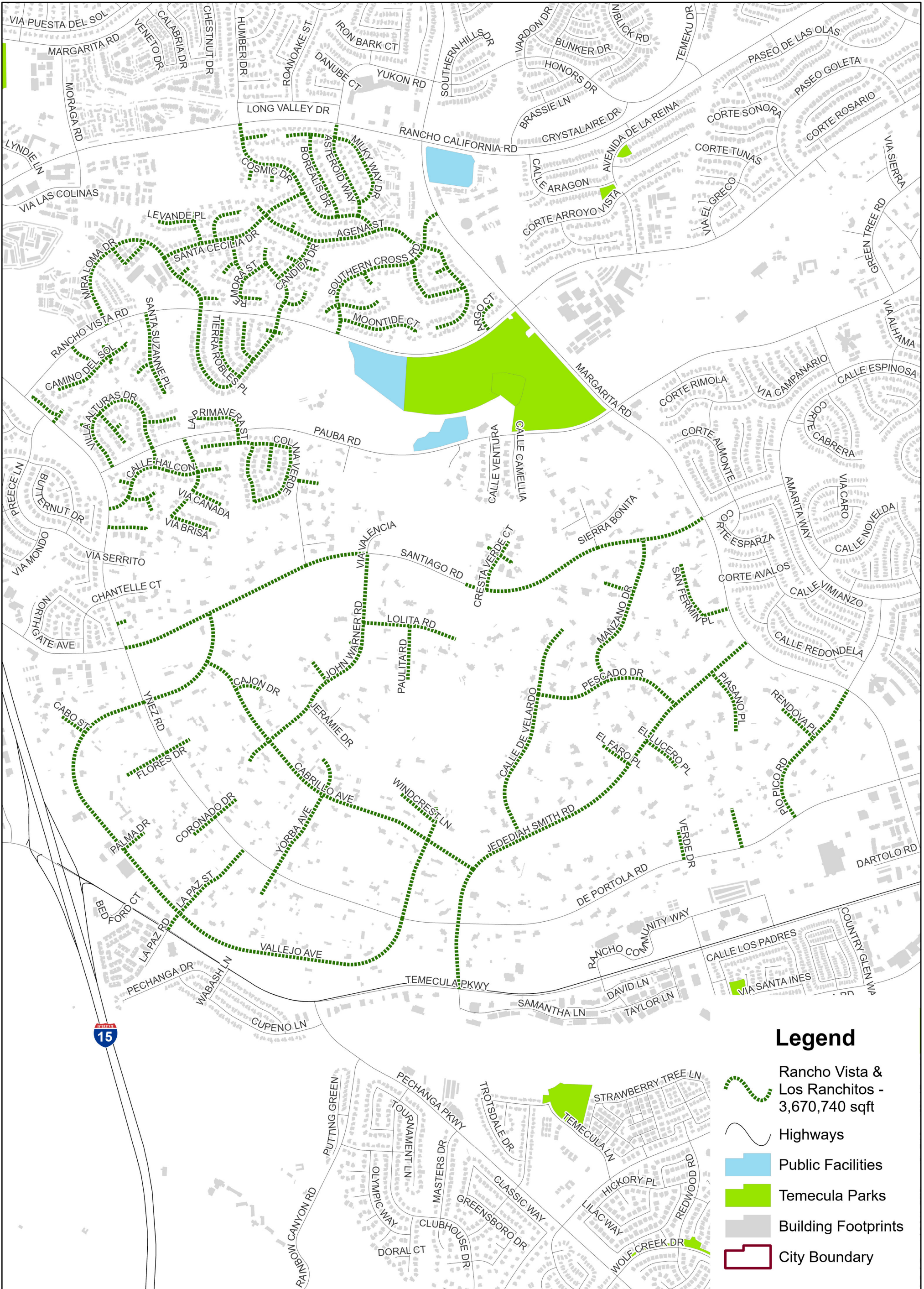










City of Temecula - PW23-16 Citywide Slurry Seal FY 2022-2023



Legend

-  Rancho Vista & Los Ranchitos - 3,670,740 sqft
-  Highways
-  Public Facilities
-  Temecula Parks
-  Building Footprints
-  City Boundary

0 0.1 0.2 Miles

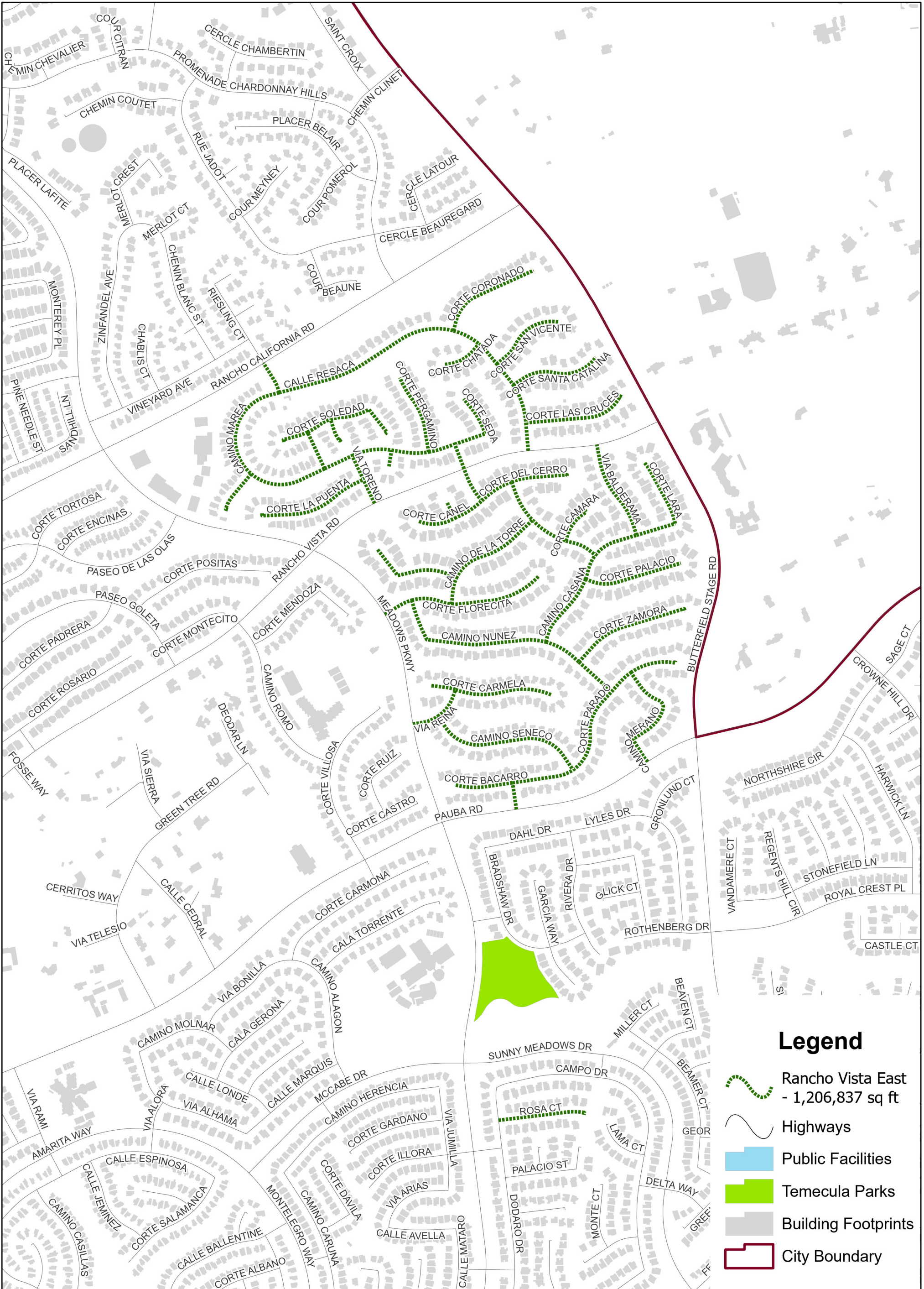
Updated 8/8/2023

The map SlurrySeal.mxd is maintained by City of Temecula GIS. Data and information represented on this map are subject to update and modification. The City of Temecula assumes no warranty or legal responsibility for the information contained on this map. This map is not for reprint or resale. Visit the City of Temecula GIS online at <https://temeculaca.gov/gis>





City of Temecula - PW23-16 Citywide Slurry Seal FY 2022-2023



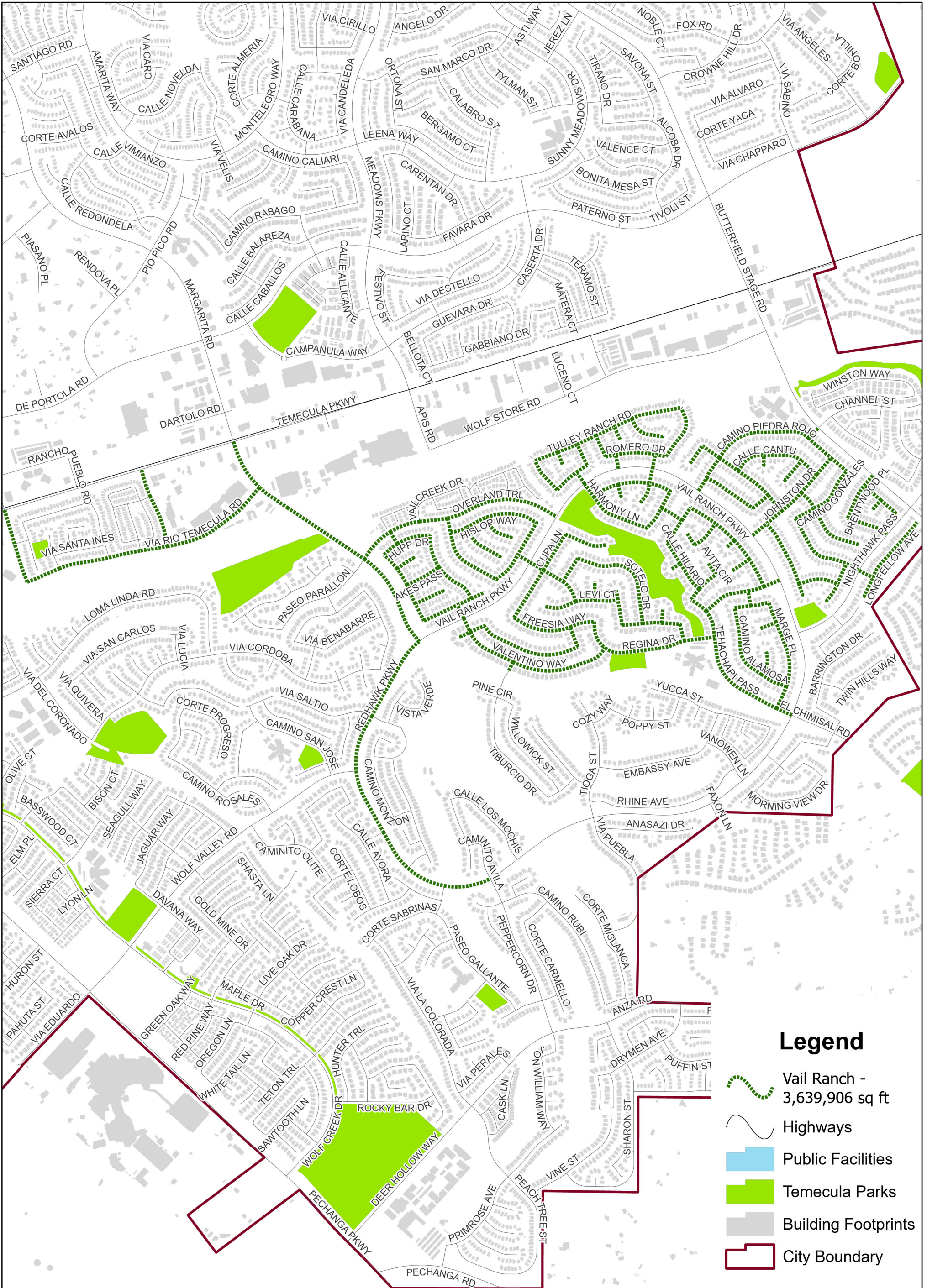
The map SlurrySeal.mxd is maintained by City of Temecula GIS. Data and information represented on this map are subject to update and modification. The City of Temecula assumes no warranty or legal responsibility for the information contained on this map. This map is not for reprint or resale. Visit the City of Temecula GIS online at <https://temeculaca.gov/gis>

0 0.1 0.2 Miles

Updated 8/8/2023



City of Temecula - PW23-16 Citywide Slurry Seal FY 2022-2023 Additive Alternate Bid



The map SlurrySeal.mxd is maintained by City of Temecula GIS. Data and information represented on this map are subject to update and modification. The City of Temecula assumes no warranty or legal responsibility for the information contained on this map. This map is not for reprint or resale. Visit the City of Temecula GIS online at <https://temeculaca.gov/gis>