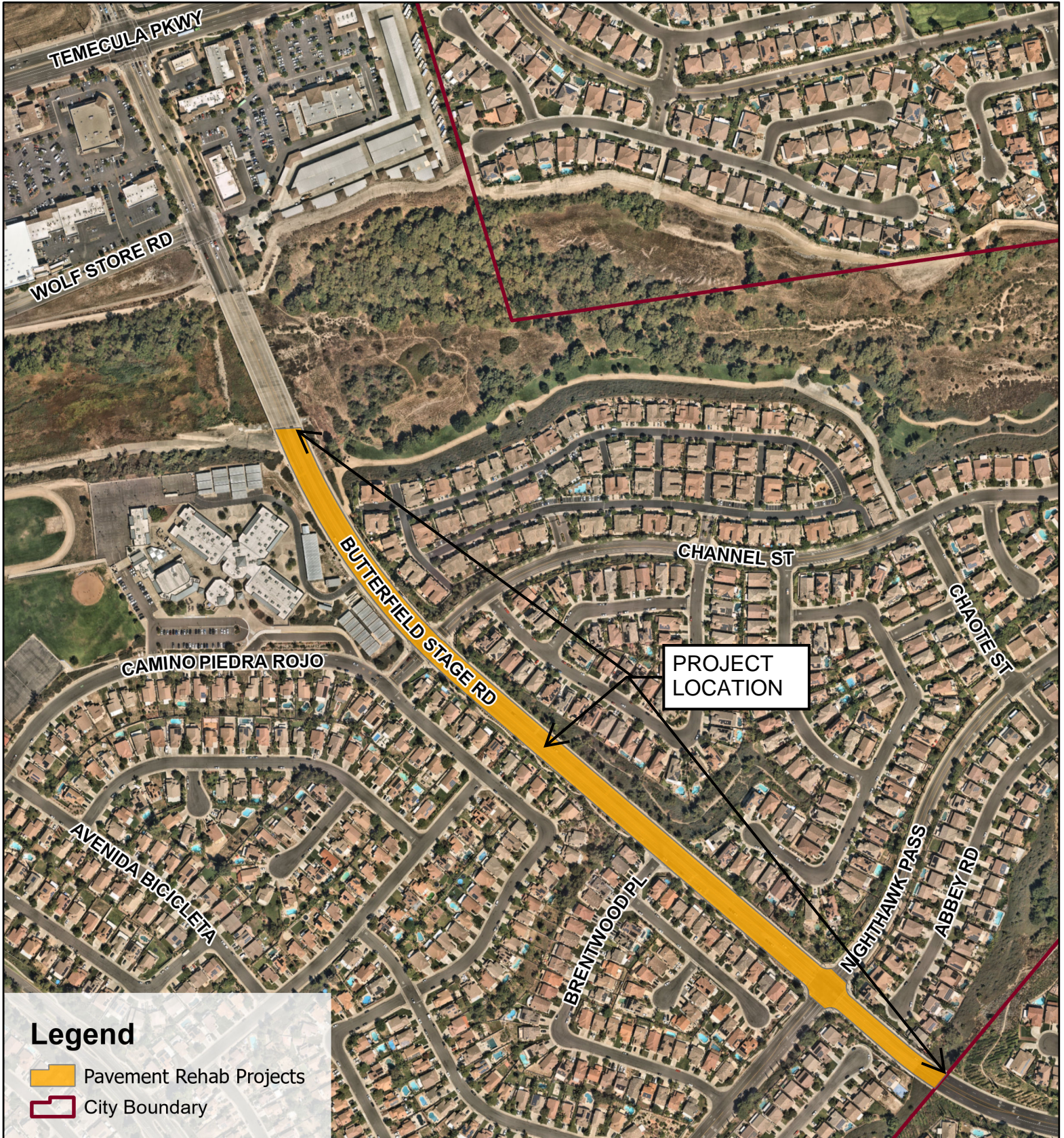




# PAVEMENT REHABILITATION PROGRAM - CITYWIDE, PW 23-19 BUTTERFIELD STAGE ROAD



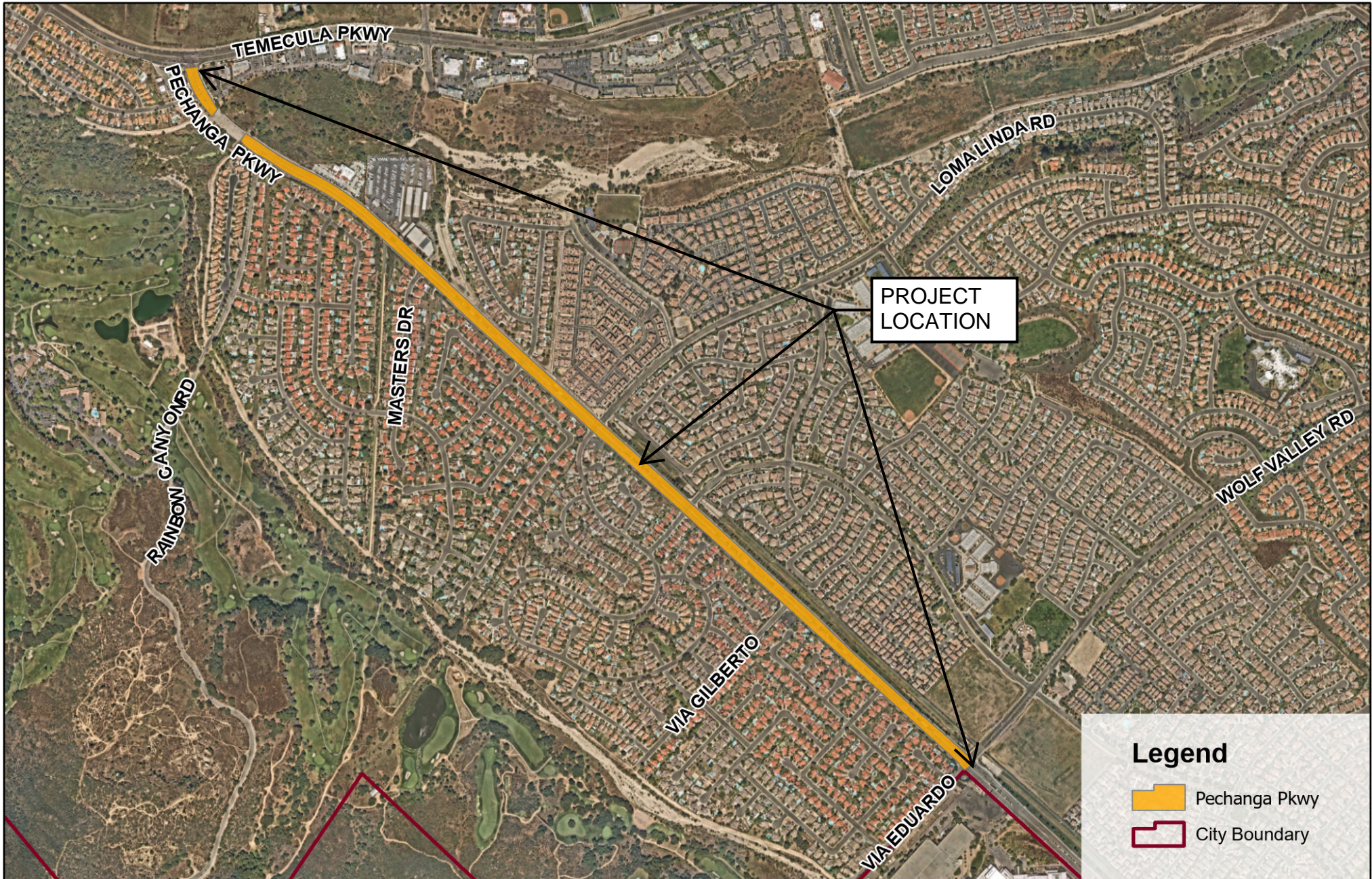
The map PavementRehabProjects.mxd is maintained by City of Temecula GIS. Data and information represented on this map are subject to update and modification. The City of Temecula assumes no warranty or legal responsibility for the information contained on this map. This map is not for reprint or resale. Visit the City of Temecula GIS online at <https://temeculaca.gov/gis>

0 200 400 Feet

Updated 2/7/2024



# PAVEMENT REHABILITATION PROGRAM - CITYWIDE, PW 23-19 PECHANGA PARKWAY

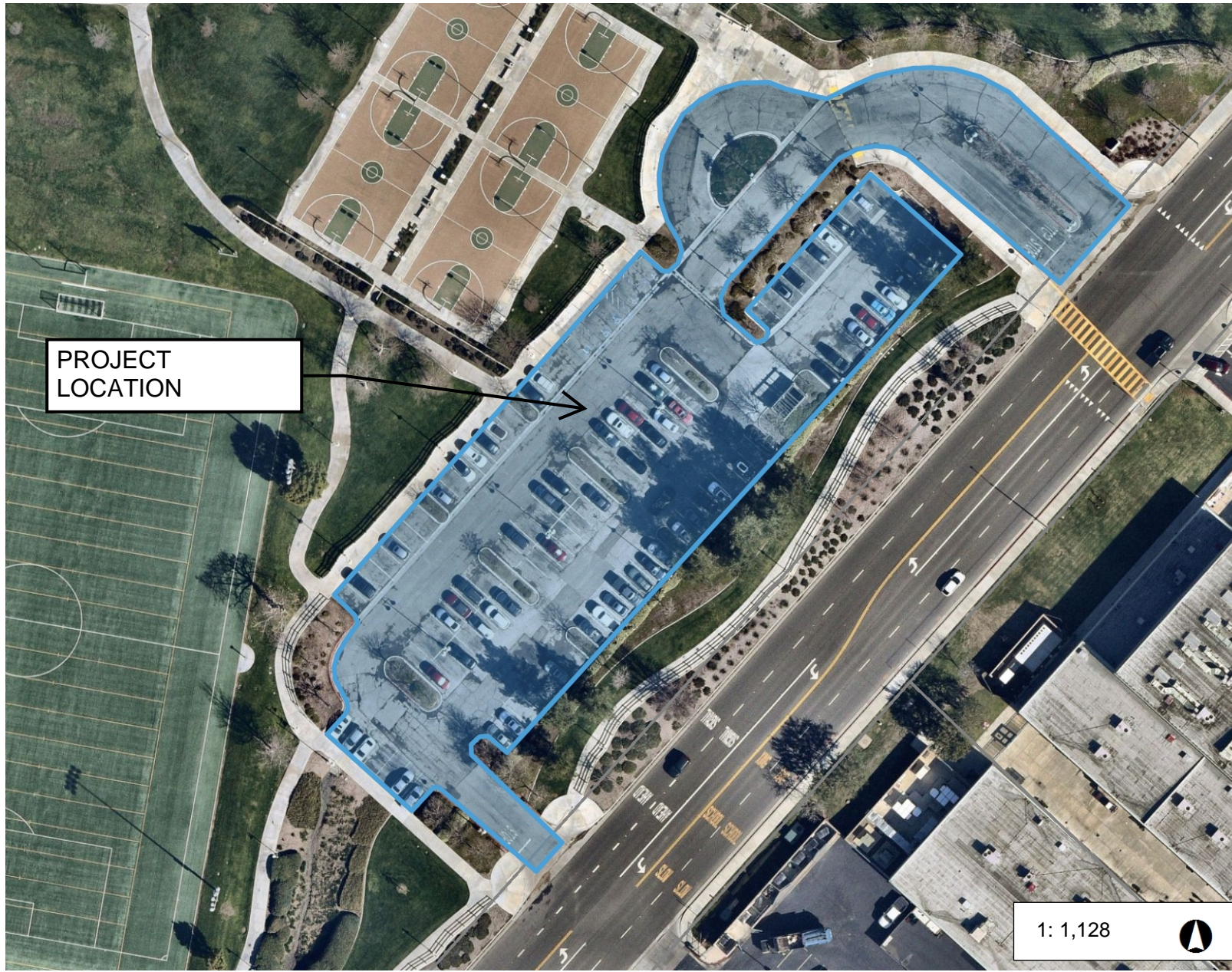
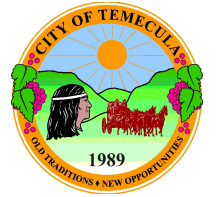


The map PaubaPechanga.mxd is maintained by City of Temecula GIS. Data and information represented on this map are subject to update and modification. The City of Temecula assumes no warranty or legal responsibility for the information contained on this map. This map is not for reprint or resale. Visit the City of Temecula GIS online at <https://temeculaca.gov/gis>

0 0.1 0.2 Miles

Updated 10/27/2023

# PAVEMENT REHABILITATION PROGRAM - CITYWIDE, PW 23-19, Patricia H. Birdsall Sports Park (Birdsall Parking Lot)



### Legend

- Parcels (February 2024)
- City of Temecula Boundary

PROJECT  
LOCATION

1: 1,128



188.1                      0                      94.04                      188.1 Feet

WGS\_1984\_Web\_Mercator\_Auxiliary\_Sphere  
© Latitude Geographics Group Ltd.

This map is a user generated static output from an Internet mapping site and is for reference only. Data layers that appear on this map may or may not be accurate, current, or otherwise reliable.

THIS MAP IS NOT TO BE USED FOR NAVIGATION

### Notes