



SHRUB PLANTING DETAIL



Statement of Architectural Style

SPANISH STYLE

THE EXTERIOR ARCHITECTURE OF THE PROJECT IS MEANT TO CONVEY THE SPANISH 'ADALUSIAN' STYLE, AS DISCUSSED IN THE OLD TOWN SPECIFIC PLAN PAGES V-32 THROUGH V-39.

THE ADALUSIAN STYLE IS CHARACTERIZED BY ASYMMETRICAL FACADES AND BROKEN UP BUILDING MASSING WITH MORE SIMPLE ARCHITECTURAL DETAILING.

GROUND FLOORS WILL OFTEN HAVE SUNKEN PORCHES OR ARCADES WITH STUCCO OR WOOD COLUMNS.

WINDOWS ARE OFTEN RECTANGULAR AND SUNKEN BACK INTO THICKENED WALL AREAS.

USE OF ARCHES ARE OPTIONAL.

WALLS WILL BE OF SMOOTH STUCCO FINISH AND ROOFS WILL USE RED/BROWN SPANISH TILE.

THE USE OF CERAMIC TILE AND TERRACOTTA TILE CAN BE USED AS ACCENT.

OUR PROJECT AIMS TO CHARACTERIZE MANY OF THE FEATURES OF THE ANDALUSIAN STYLE:

- USE OF SUNKEN PORCH
- VARIED BUILDING MASSING
- STUCCO WALLS
- THICKENED WALLS WITH SUNKEN WINDOWS AT FRONT FACADE.
- USE OF RED/BROWN BARREL TILE ROOF
- USE OF CERAMIC AND TERRACOTTA TILE
- SOME STONE AT LOWER GROUND LEVEL AND COLUMN LIKE FEATURES
- BLACK IRON ACCENTS
- WOOD ACCENTS

oldham
architects

oldham architects
680 Langsdorf Drive, Suite 202B
Fullerton, California 92831
714.482.8296 | oldham-architects.com



© COPYRIGHT: Oldham Architects expressly reserves all rights to these plans by common copyright privileges. These plans may not be reproduced, changed, or copied in any manner or turned over to a third party without the expressed written consent of Ryan E. Oldham.

Side BBQ Canopy

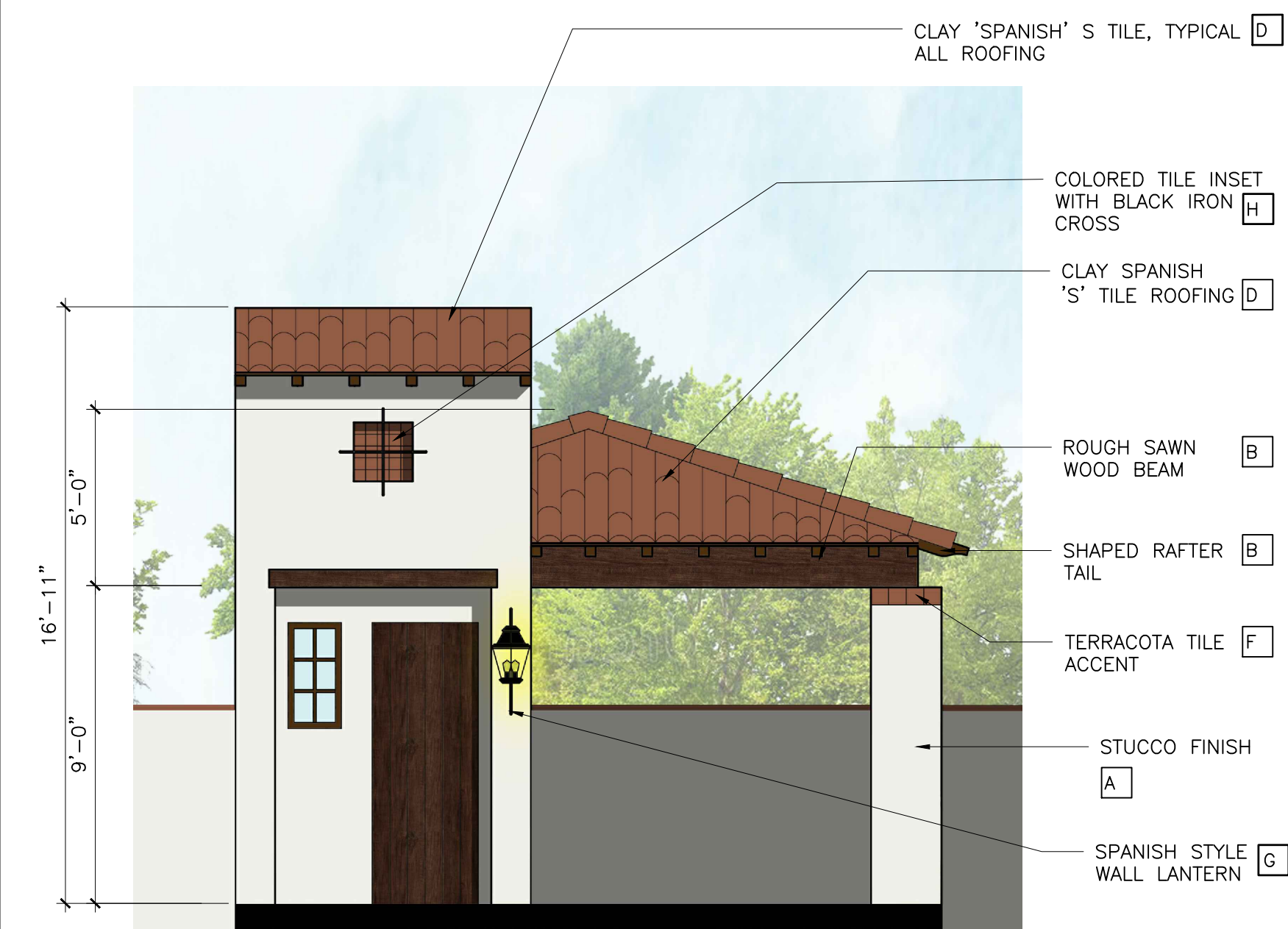
Scale: 1/4" = 1'-0"

Building A Left Colored Exterior Elevation

Scale: 1/8" = 1'-0"

Building A Right Colored Exterior Elevation

Scale: 1/8" = 1'-0"

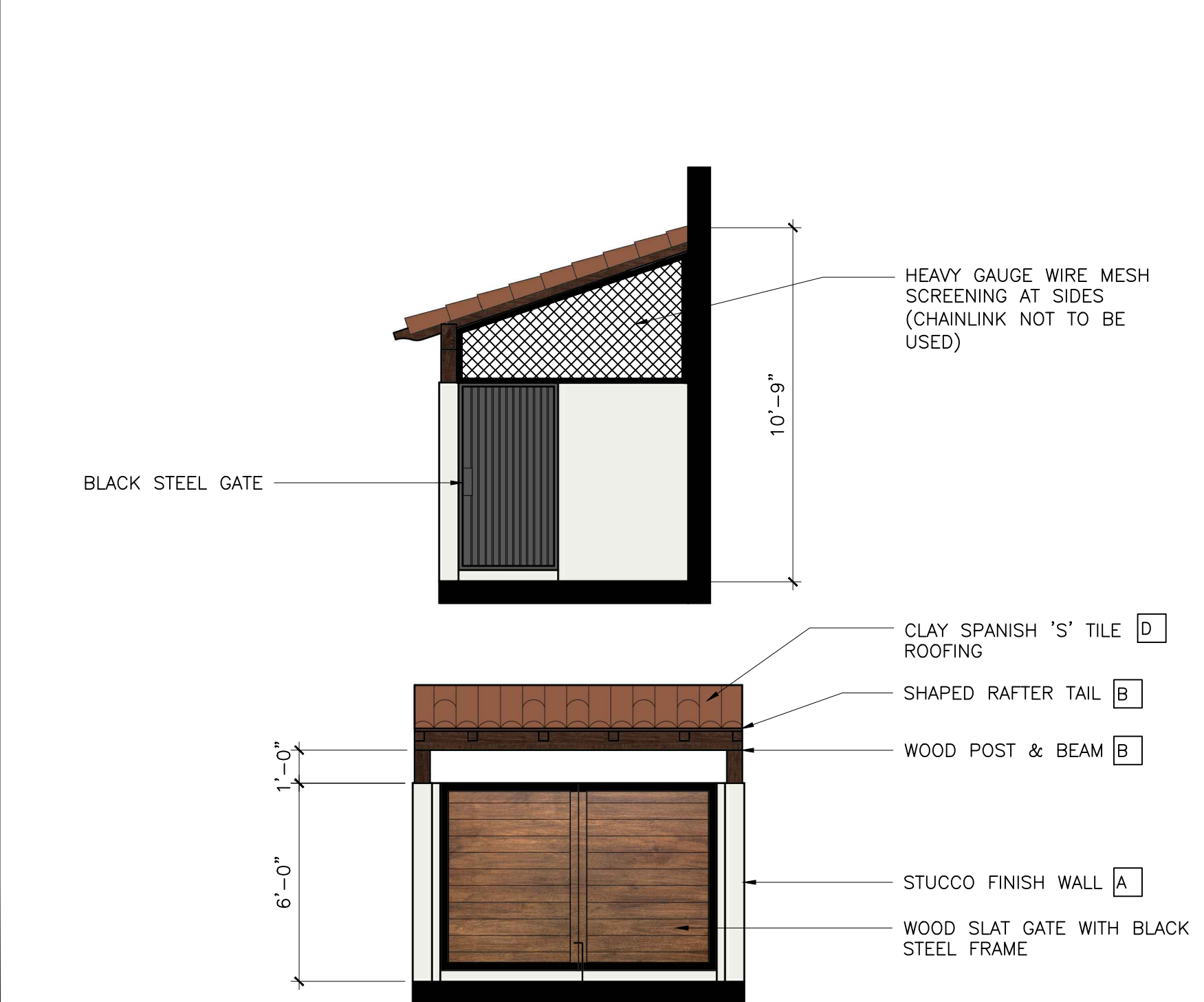


Front BBQ Canopy

Scale: 1/4" = 1'-0"

Building A Rear Colored Exterior Elevation

Scale: 1/8" = 1'-0"

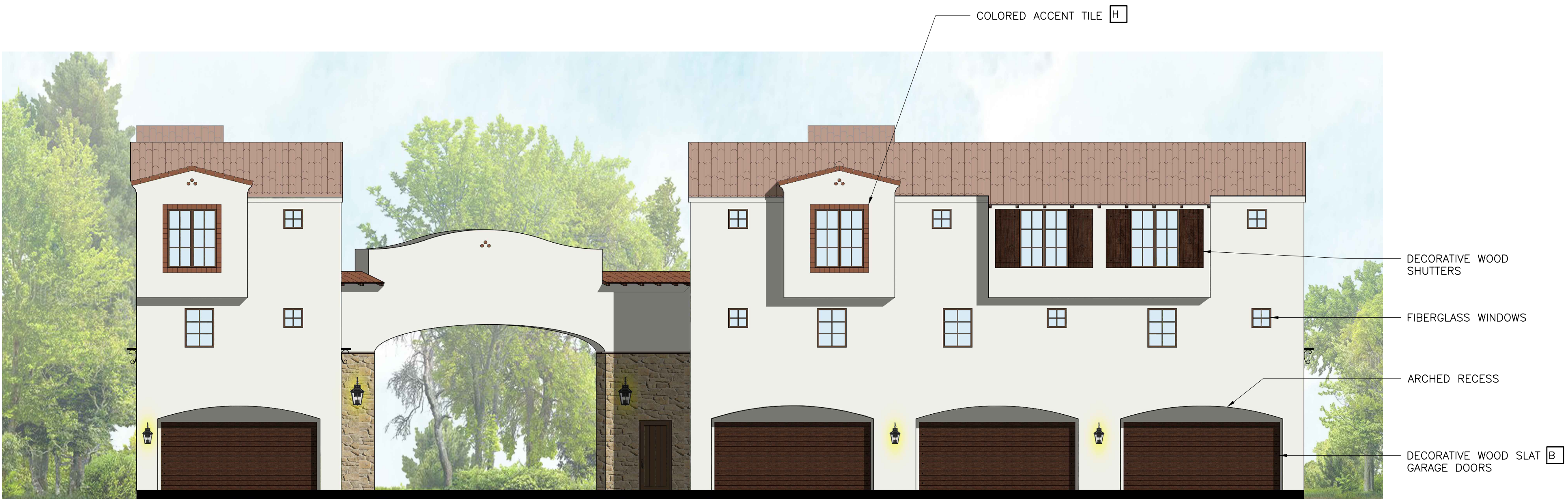


Trash Enclosure

Scale: 1/4" = 1'-0"

Building A Front Colored Exterior Elevation

Scale: 1/8" = 1'-0"



Material Legend

SEE MATERIAL BOARD FOR SAMPLES/PHOTOS OF MATERIALS

A EXTERIOR PLASTER

OMEGA STUCCO
TYPE: 7/8" 3-COAT
FINISH: SMOOTH
COLOR: 420 FLORAL WHITE

B WOOD ACCENTS

ROUGH SAWN DOUGLAS FIR
FINISH: PAINTED
COLOR: DARK BROWN

C STONE VENEER

CREATIVE MINES
STYLE: CRAFT LEDGE
COLOR: COYOTE
GROUT: TO BLEND W/OVERGROUT

D CLAY ROOFING TILE

VEREA
STYLE: SPANISH 'S' TILE
COLOR: VINATGE

E WINDOWS & SLIDING DOOR

MARVIN (OR SIMILAR)
STYLE: ESSENTIAL ALL FIBERGLASS
COLOR: BRONZE
GLASS: DUAL LOW-E W/DIVIDED LITES

F IRON RAILING

CUSTOM FABRICATION
STYLE: FLAT TOP & BOTTOM RAIL WITH TWISTED PICKETS & DECORATIVE NODES
COLOR: BLACK

G LIGHT SCONCE

MINKA LAVRY
STYLE: MERRIMACK COLLECTION
COLOR: BLACK W/OBSCURE GLASS

H ACCENT TILE

LOCAL SOURCE TBD
STYLE: 4X4
COLOR: TERRACOTTA

J TERRACOTA TILE

LOCAL SOURCE TBD
STYLE: 8X8
COLOR: TERRACOTTA

New Town Home Development
Temecula Old Town Town Homes

6th Street & Feliz Valdez Avenue, Temecula, California

PROJECT No.: 21101

DRAWN: DM

CHECK: RO

ISSUE:

△ 01.06.22 PLANNING SCREEN REVIEW

△ 07.15.22 PLANNING DESIGN REVIEW #1

△ 12.02.22 PLANNING DESIGN REVIEW #2

△ 03.31.23 PLANNING DESIGN REVIEW #3

△ 06.15.23 PLANNING DESIGN REVIEW #4

△ 11.21.23 PLANNING DESIGN REVIEW #5

△ 01.30.25 FINAL PLANNING D.R.

△

△

△

△

△

△

△

△

△

△

△

△

△

△

△

△

△

△

△

△

△

△

△

△

△

△

△

△

△

△

△

△

△

△

△

△

△

△

△

△

△

△

△

△

△

△

△

△

△

△

△

△

△

△

△

△

△

△

△

△

△

△

△

△

△

△

△

△

△

△

△

△

△

△

△

△

△

△

△

△

△

△

△

△

△

△

△

△

△

△

△

△

△

△

△

△

△

△

△

△

△

△

△

△

△

△

△

△

△

△

△

△

△

△

△

△

△

△

△

△

△

△

△

△

△

△

△

△

△

△

△

△

△

△

△

△

△

△

△

△

△

△

△

△

△

△

△

△

△

△

△

△

△

△

△

△

△

△

△

△

△

△

△

△

△

△

△

△

△

△

△

△

△

△

△

△

△

△

△

△

△

△

△

△

△

△

△

△

△

△

△

△

△

△

△

△

△

△

△

△

△

△

△

△

△

△

△

△

△

△

△

△

△

△

△

△

△

△

△

△

△

△

△

△

△

△

△

△

△

△

△

△

△

△