

FOLD-OUT TIMELINE SIDE 1



# Setting the Stage

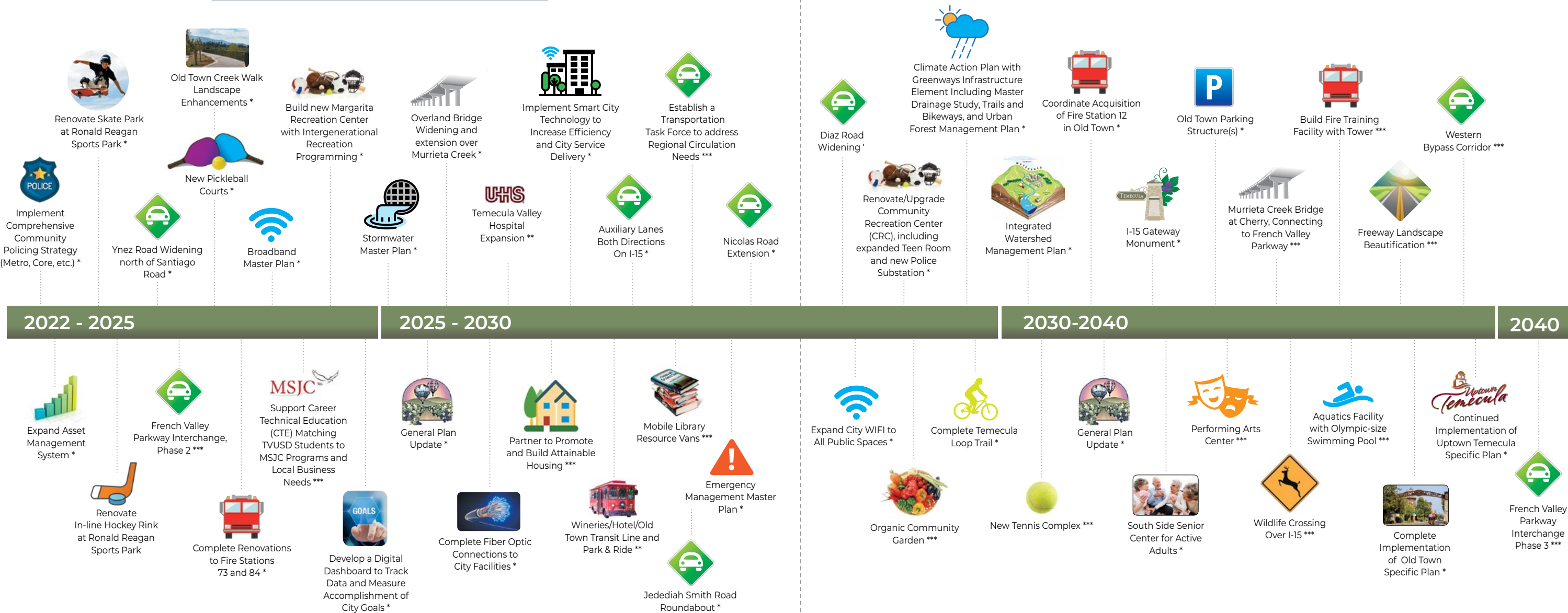


**Where We Have Been** Temecula grew from a small bedroom community to a regional center in its first 20 years, all the while maintaining a highly valued quality of life for its nearly 110,000 residents. Over the twelve years since the first QLMP was adopted, a number of systems have been put in place to protect and enhance the investments that were made during the City's early years. The QLMP has been integrated thoroughly into the City's Capital Improvement Program (CIP) budgeting and its Annual Operating Budget (AOB). Increasingly, the focus is to ensure that the City is able to maintain the highest quality of services for its residents and that it is building its resiliency against all types of potential future disruptions, including economic, health, and natural disasters.



# Citizen's 20 Year Priority TIMELINE

## FOLD-OUT TIMELINE SIDE 2



Building Greatness  
Maintaining Excellence

\*City Development  
\*\* Private Development  
\*\*\* Public-Private Development or Multi-Public Agency Development  
NOTE: Timeline will change due to budget considerations and community priorities. Project placement on the timeline indicates approximate initiation/completion within a 5 to 10 year period, not the exact year it will take place.