

# **CAL FIRE/Riverside County Fire Department**

## **Emergency Incident Statistics**



**Shawn C. Newman**

**Fire Chief**

2/4/2019

**Report Provided By: Riverside County Fire Department**

**Communications and Technology Division**

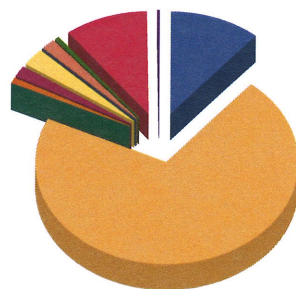
**GIS Section**

**Please refer to Map and Incident by Battalion, Station, Jurisdiction**

Incidents Reported for the month of January, 2019 and Temecula City And Both (Code 2, Alpha, Omega, Code 3, Charlie, Delta, Bravo, Echo)  
\*Incidents are shown based on the primary response area for the incident location. This does not represent total response times for all units only the first unit in.

## Response Activity

### Incidents Reported for the month of January, 2019 and Temecula City And Both (Code 2, Alpha, Omega, Code 3, Charlie, Delta, Bravo, Echo)



False Alarm	82	11.1%
Medical	523	70.8%
Multi-Fam Dwelling Fire	1	0.1%
Other Fire	5	0.7%
Other Misc	14	1.9%
Public Service Assist	19	2.6%
Res Fire	1	0.1%
Ringing Alarm	11	1.5%
Standby	5	0.7%
Traffic Collision	75	10.1%
Vehicle Fire	3	0.4%
Total:	739	100.0%

False Alarm	82
Medical	523
Multi-Fam Dwelling Fire	1
Other Fire	5
Other Misc	14
Public Service Assist	19
Res Fire	1
Ringing Alarm	11
Standby	5
Traffic Collision	75
Vehicle Fire	3
<b>Incident Total:</b>	<b>739</b>

### Average Enroute to Onscene Time\*

Enroute Time = When a unit has been acknowledged as responding. Onscene Time = When a unit has been acknowledge as being on scene. For any other statistic outside Enroute to Onscene please contact the IT Help Desk at 951-940-6900

<5 Minutes	+5 Minutes	+10 Minutes	+20 Minutes	Average	% 0 to 5 min
519	208	13	0	4.3	70.2%

\*CODE 3 and CODE 2 incidents are included in the total count of incidents and the average Enroute to Onscene Time.

### Incidents by Battalion, Station and Jurisdiction

			False Alarm	Medical	Multi-Fa m	Other Fire	Other Misc	Public Service	Res Fire	Ringing Alarm	Standby	Traffic Collisio	Vehicle Fire	Total
<b>Special District</b>	Station Pechanga # 2	Temecula	0	1	0	0	0	1	0	0	0	0	0	2
	Station Total		0	1	0	0	0	1	0	0	0	0	0	2
	<b>Battalion Total</b>		0	1	0	0	0	1	0	0	0	0	0	2
<b>Battalion 15</b>	Station 12	Temecula	13	96	0	3	3	0	0	2	1	20	0	138
	Station Total		13	96	0	3	3	0	0	2	1	20	0	138
	Station 73 Rancho California	Temecula	40	163	0	1	5	7	0	3	2	27	1	249
	Station Total		40	163	0	1	5	7	0	3	2	27	1	249
	Station 83 French Valley	Temecula	1	5	0	0	0	0	0	1	0	0	0	7
	Station Total		1	5	0	0	0	0	0	1	0	0	0	7
	Station 84 Parkview	Temecula	13	116	1	1	3	6	0	3	1	10	0	154
	Station Total		13	116	1	1	3	6	0	3	1	10	0	154
	Station 92 Wolf Creek	Temecula	13	115	0	0	3	4	1	1	1	14	2	154
	Station Total		13	115	0	0	3	4	1	1	1	14	2	154
	Station 95 Roripaugh Ranch	Temecula	2	27	0	0	0	1	0	1	0	4	0	35
	Station Total		2	27	0	0	0	1	0	1	0	4	0	35
	<b>Battalion Total</b>		82	522	1	5	14	18	1	11	5	75	3	737
<b>Grand Total</b>			82	523	1	5	14	19	1	11	5	75	3	739

### Incidents by Jurisdiction

	False Alarm	Medical	Multi-Fam	Other Fire	Other Misc	Public Service	Res Fire	Ring Alarm	Standby	Traffic Collisio	Vehicle Fire	Total
Temecula	82	523	1	5	14	19	1	11	5	75	3	739
<b>Grand Total</b>	<b>82</b>	<b>523</b>	<b>1</b>	<b>5</b>	<b>14</b>	<b>19</b>	<b>1</b>	<b>11</b>	<b>5</b>	<b>75</b>	<b>3</b>	<b>739</b>

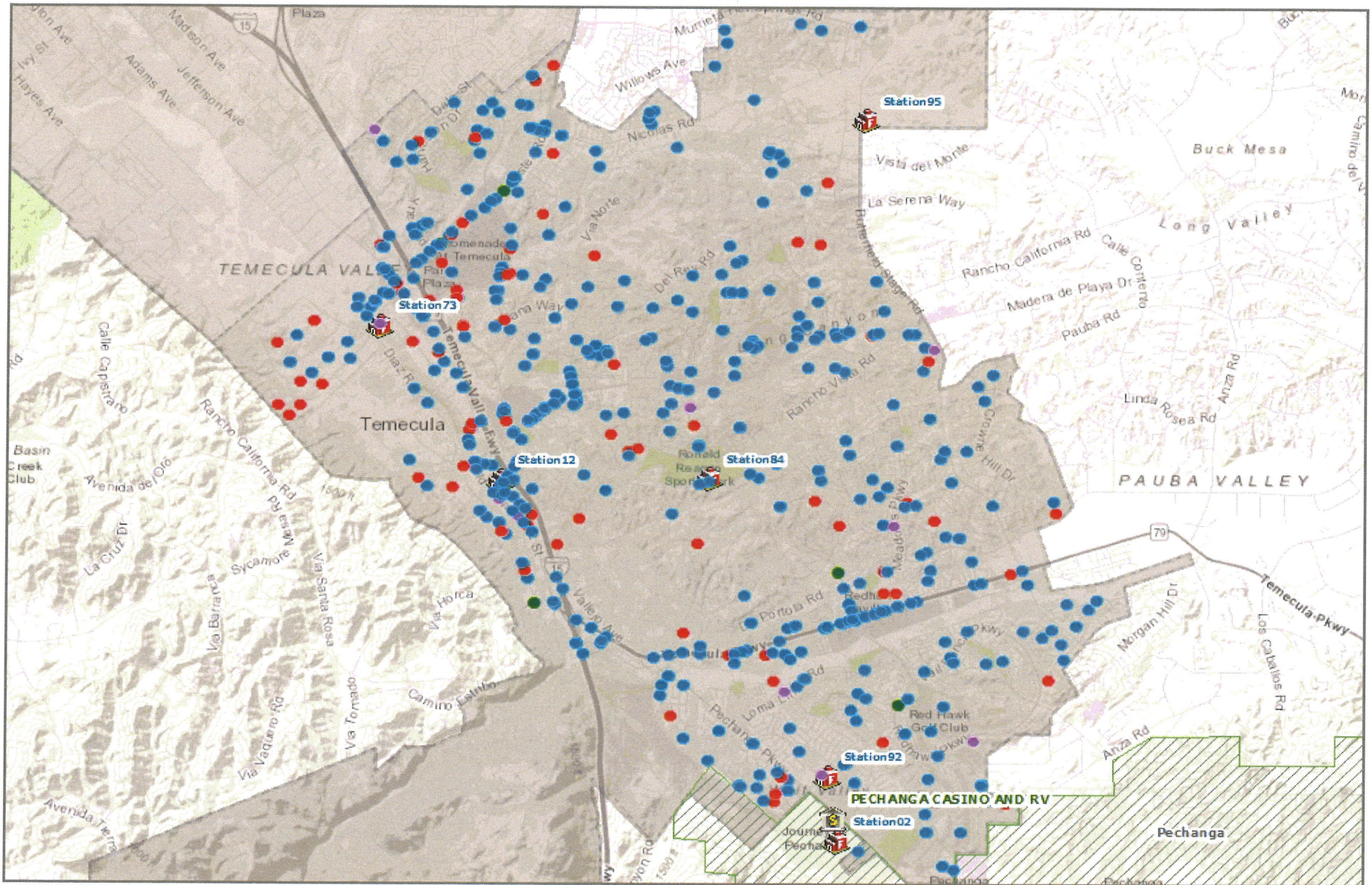


## Incidents by Supervisorial District - Summary

	DISTRICT 3 CHUCK WASHINGTON	Grand Total
False Alarm	82	82
Medical	523	523
Multi-Fam Dwelling Fire	1	1
Other Fire	5	5
Other Misc	14	14
Public Service Assist	19	19
Res Fire	1	1
Ringin Alarm	11	11
Standby	5	5
Traffic Collision	75	75
Vehicle Fire	3	3
<b>Total</b>	<b>739</b>	<b>739</b>



MONTH = 1 and YEAR = 2019 and CITYNAME = 'Temecula'



### Legend

- |   |  |                   |              |
|---|--|-------------------|--------------|
| <span style="color: red;">●</span> Fire       | <span style="color: blue;">●</span> Medical      | Rivers ide County | Fire Station |
| <span style="color: green;">●</span> Hazard   | <span style="color: purple;">●</span> Other Misc | Reservations      | Casinos      |
| <span style="color: yellow;">●</span> Haz Mat | <span style="color: orange;">●</span> PSA        |                   |              |

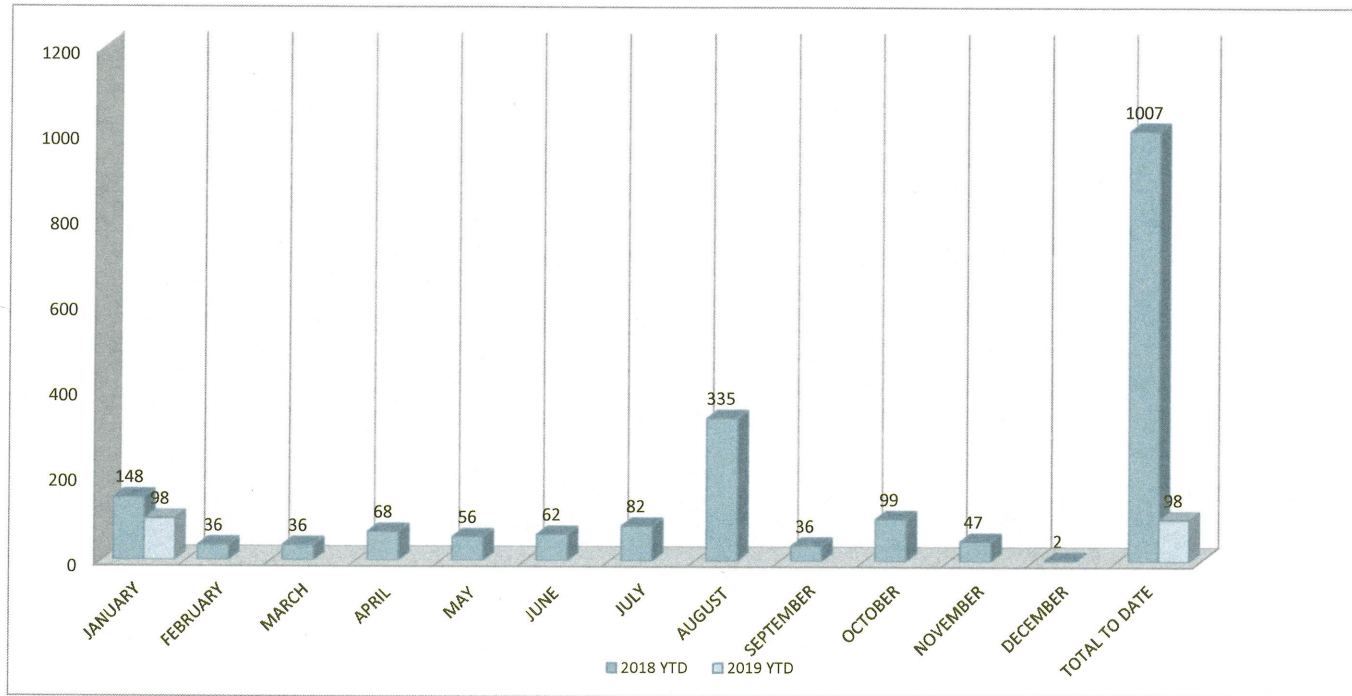


Riverside County Fire GIS



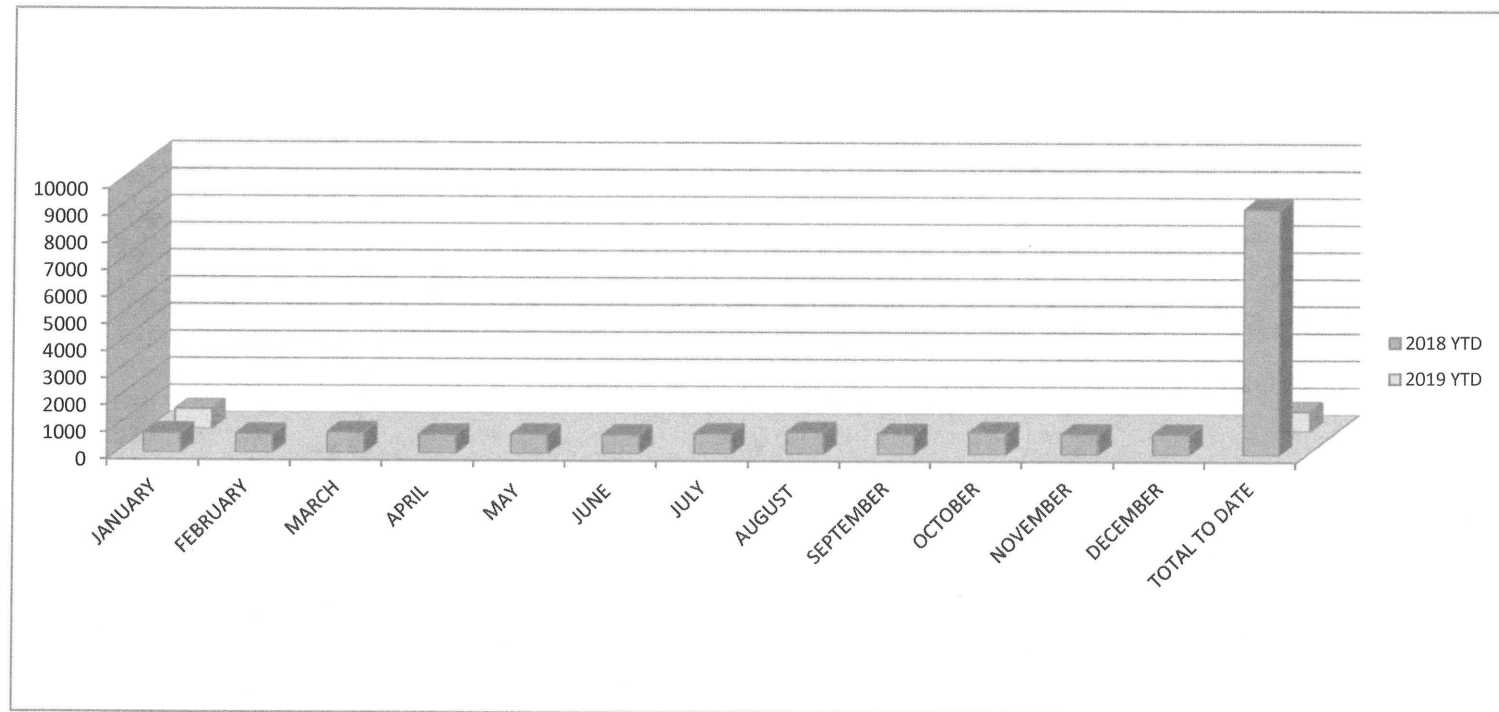


# **FIRE DEPARTMENT CLASS TOTAL COMPARISON** **2018 vs 2019**



MONTH	2018 YTD	2019 YTD
JANUARY	148	98
FEBRUARY	36	
MARCH	36	
APRIL	68	
MAY	56	
JUNE	62	
JULY	82	
AUGUST	335	
SEPTEMBER	36	
OCTOBER	99	
NOVEMBER	47	
DECEMBER	2	
TOTAL TO DATE	1007	98

## FIRE DEPARTMENT TOTAL CALL COMPARISON 2018 vs. 2019



MONTH	2018 YTD	2019 YTD
JANUARY	741	739
FEBRUARY	715	
MARCH	782	
APRIL	710	
MAY	733	
JUNE	707	
JULY	753	
AUGUST	822	
SEPTEMBER	763	
OCTOBER	826	
NOVEMBER	772	
DECEMBER	764	
TOTAL TO DATE	9088	739





## Temecula Battalion Fire Stations- Public Education

Reporting Month:      January                      Reporting Year:              2019

Reporting Stations:                      12, 73, 84, 92 and 95

### PR and Public Education Programs:

Total Number of Events for Reporting Month	Event Type	Total Number of Hours	Number of Public Contacts:
2	School Event	14	10
0	Adult Education	0	0
0	Fair/Safety Expo	0	0
0	Display	0	0
9	Station Tour	11	216
0	Fire Safety Trailer	0	0
2	Other	1	30
<b>Field Inspections:</b>	<b>LE-100's (Weed Abatement)</b>		
Total Number of Initial Field Inspections for Reporting Month	0	Total Number of LE-100 Inspections for Reporting Month	0
Total Number of Re-inspections for Reporting Month	0	<b>Prevention Referrals:</b> Total Number of Fire Prevention Referrals for Reporting Month	0

### Significant Events:

Provide a brief synopsis of significant TC's, Fires, Near Drowning's, Road Closures etc...  
Include photos if available.

The month of January the Temecula Fire department responded to over 735 calls.