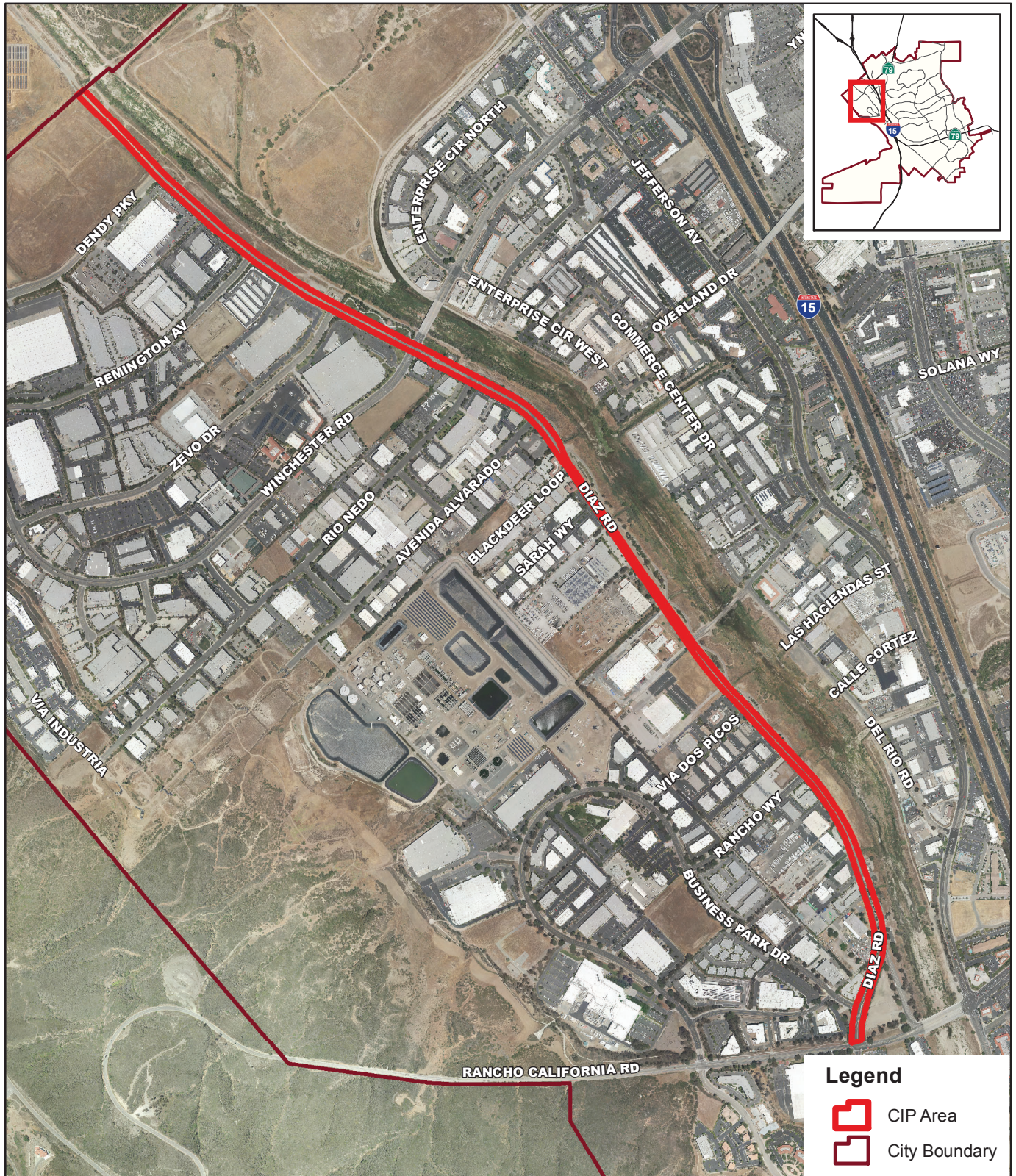




## Diaz Road Expansion Circulation Project Location



The map DiazRoad.mxd is maintained by City of Temecula GIS. Data and information represented on this map are subject to update and modification. The City of Temecula assumes no warranty or legal responsibility for the information contained on this map. This map is not for reprint or resale. Visit the City of Temecula GIS online at <https://temecula.gov/gis>

0 400 800 Feet  
2018 Aerial Data